

DATASHEET

FIGLA Rabbit Polyclonal Antibody

CAT. NO. APA18358

KEY FEATURES

Target	FIGLA	Source / Host	Rabbit
Reactivity	Human	Clonality	Polyclonal
Applications	WB	Conjugation	Unconjugated
Form / Buffer	Liquid in 0.42% Potassium phosphate, 0.87% Sodium chloride, pH 7.3, 30% glycerol, and 0.01% sodium azide.		Storage at -20°C

BACKGROUND

Germline specific transcription factor implicated in postnatal oocyte-specific gene expression. Plays a key regulatory role in the expression of multiple oocyte-specific genes, including those that initiate folliculogenesis and those that encode the zona pellucida (ZP1, ZP2 and ZP3) required for fertilization and early embryonic survival. Essential for oocytes to survive and form primordial follicles. The persistence of FIGLA in adult females suggests that it may regulate additional pathways that are essential for normal ovarian development. Binds to the E-box (5'-CANNTG-3') of the ZPs (ZP1, ZP2, ZP3) promoters.

APPLICATION

To ensure optimal assay performance, AREX recommends conducting reagent titration tailored to each testing system for optimal detection results.

WB	1:500 - 1:1000
----	----------------

*Results are sample-specific. Please refer to your local assay conditions and test parameters for reference.

PRODUCT OVERVIEW

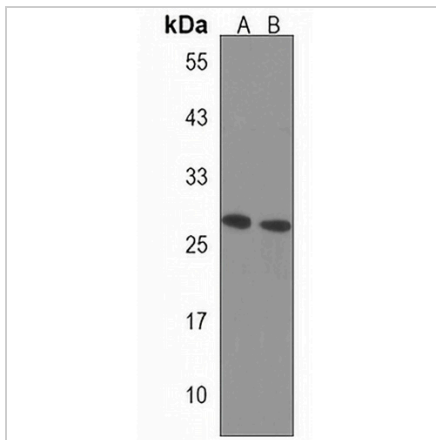
Description	Rabbit polyclonal antibody to FIGLA
Specificity	Recognizes endogenous levels of FIGLA protein.
Antibody Type	Primary antibody
Immunogen	KLH-conjugated synthetic peptide encompassing a sequence within the Central region of human FIGLA. The exact sequence is proprietary.
Purification	The antibody was purified by immunogen affinity chromatography.
Molecular Weight	Predicted: 24 kD; Observed: 28 kD
Form/Buffer	Liquid in 0.42% Potassium phosphate, 0.87% Sodium chloride, pH 7.3, 30% glycerol, and 0.01% sodium azide.
Alternative Names	BHLHC8; Factor in the germline alpha; FIGalpha; Class C basic helix-loop-helix protein 8; bHLHc8; Folliculogenesis-specific basic helix-loop-helix protein; Transcription factor FIGa
Gene Symbol	FIGLA
Entrez Gene	344018(Human)
SwissProt	Q6QHK4(Human)

*AREX continuously optimizes our products. Webpage content may not reflect the latest updates. For inquiries, please contact info@arexbio.com or your local distributor.

*Clone Number, Reactivity, Source/Host and Clonality can be found in the product name and Key Features section above.

DATASHEET**FIGLA Rabbit Polyclonal Antibody**

CAT. NO. APA18358

DATA

Western blot analysis of FIGLA expression in human ovary (A), T47D (B) whole cell lysates. (Predicted band size: 24 kD; Observed band size: 28 kD)

STORAGE

Store at 4°C short term. For long term storage, store at -20°C, avoiding freeze/thaw cycles.

NOTE

For Research Use Only. Not for diagnostic, therapeutics, prophylactic or in vivo use.