

DATASHEET

ONECUT3 Rabbit Polyclonal Antibody

CAT. NO. APA18363

KEY FEATURES

Target	ONECUT3	Source / Host	Rabbit
Reactivity	Human	Clonality	Polyclonal
Applications	WB	Conjugation	Unconjugated
Form / Buffer	Liquid in 0.42% Potassium phosphate, 0.87% Sodium chloride, pH 7.3, 30% glycerol, and 0.01% sodium azide.		Storage at -20°C

BACKGROUND

Transcriptional activator. Binds the consensus DNA sequence 5'-DHWATTGAYTWW-3' on a variety of gene promoters such as those of HNF3B and TTR .

APPLICATION

To ensure optimal assay performance, AREX recommends conducting reagent titration tailored to each testing system for optimal detection results.

WB	1:500 - 1:1000
----	----------------

*Results are sample-specific. Please refer to your local assay conditions and test parameters for reference.

PRODUCT OVERVIEW

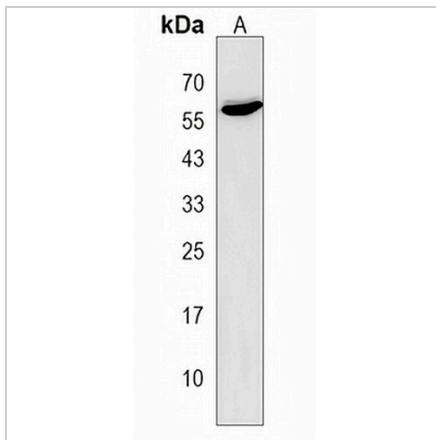
Description	Rabbit polyclonal antibody to ONECUT3
Specificity	Recognizes endogenous levels of ONECUT3 protein.
Antibody Type	Primary antibody
Immunogen	KLH-conjugated synthetic peptide encompassing a sequence within the C-terminal region of human ONECUT3. The exact sequence is proprietary.
Purification	The antibody was purified by immunogen affinity chromatography.
Molecular Weight	Predicted: 50 kD; Observed: 55 kD
Form/Buffer	Liquid in 0.42% Potassium phosphate, 0.87% Sodium chloride, pH 7.3, 30% glycerol, and 0.01% sodium azide.
Alternative Names	One cut domain family member 3; One cut homeobox 3; Transcription factor ONECUT-3; OC-3
Gene Symbol	ONECUT3
Entrez Gene	390874(Human)
SwissProt	O60422(Human)

*AREX continuously optimizes our products. Webpage content may not reflect the latest updates. For inquiries, please contact info@arexbio.com or your local distributor.

*Clone Number, Reactivity, Source/Host and Clonality can be found in the product name and Key Features section above.

DATASHEET**ONECUT3 Rabbit Polyclonal Antibody**

CAT. NO. APA18363

DATA

Western blot analysis of ONECUT3 expression in MDAMB231 (A) whole cell lysates.
(Predicted band size: 50 kD; Observed band size: 55 kD)

STORAGE

Store at 4°C short term. For long term storage, store at -20°C, avoiding freeze/thaw cycles.

NOTE

For Research Use Only. Not for diagnostic, therapeutics, prophylactic or in vivo use.