

## DATASHEET

# TIPRL Rabbit Polyclonal Antibody

CAT. NO. APA18373

### KEY FEATURES

Target	TIPRL	Source / Host	Rabbit
Reactivity	Human	Clonality	Polyclonal
Applications	WB	Conjugation	Unconjugated
Form / Buffer	Liquid in 0.42% Potassium phosphate, 0.87% Sodium chloride, pH 7.3, 30% glycerol, and 0.01% sodium azide.		Storage at -20°C

### BACKGROUND

May be a allosteric regulator of serine/threonine-protein phosphatase 2A (PP2A). Isoform 1 inhibits catalytic activity of the PP2A(D) core complex in vitro. The PP2A(C):TIPRL complex does not show phosphatase activity. Acts as a negative regulator of serine/threonine-protein phosphatase 4 probably by inhibiting the formation of the active PPP4C:PPP4R2 complex; the function is proposed to implicate it in DNA damage response by promoting H2AX phosphorylated on Ser-140 (gamma-H2AX). May play a role in the regulation of ATM/ATR signaling pathway controlling DNA replication and repair.

### APPLICATION

To ensure optimal assay performance, AREX recommends conducting reagent titration tailored to each testing system for optimal detection results.

WB	1:500 - 1:1000
----	----------------

\*Results are sample-specific. Please refer to your local assay conditions and test parameters for reference.

### PRODUCT OVERVIEW

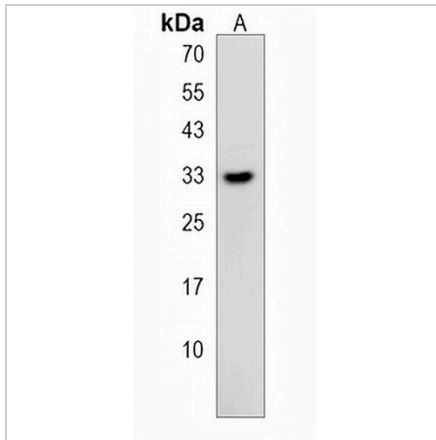
Description	Rabbit polyclonal antibody to TIPRL
Specificity	Recognizes endogenous levels of TIPRL protein.
Antibody Type	Primary antibody
Immunogen	KLH-conjugated synthetic peptide encompassing a sequence within the C-terminal region of human TIPRL. The exact sequence is proprietary.
Purification	The antibody was purified by immunogen affinity chromatography.
Molecular Weight	Predicted: 31 kD; Observed: 33 kD
Form/Buffer	Liquid in 0.42% Potassium phosphate, 0.87% Sodium chloride, pH 7.3, 30% glycerol, and 0.01% sodium azide.
Alternative Names	TIP41-like protein; Putative MAPK-activating protein PM10; Type 2A-interacting protein; TIP
Gene Symbol	TIPRL
Entrez Gene	261726(Human)
SwissProt	O75663(Human)

\*AREX continuously optimizes our products. Webpage content may not reflect the latest updates. For inquiries, please contact [info@arexbio.com](mailto:info@arexbio.com) or your local distributor.

\*Clone Number, Reactivity, Source/Host and Clonality can be found in the product name and Key Features section above.

**DATASHEET****TIPRL Rabbit Polyclonal Antibody**

CAT. NO. APA18373

**DATA**

Western blot analysis of TIPRL expression in K562 (A) whole cell lysates. (Predicted band size: 31 kD; Observed band size: 33 kD)

**STORAGE**

Store at 4°C short term. For long term storage, store at -20°C, avoiding freeze/thaw cycles.

**NOTE**

For Research Use Only. Not for diagnostic, therapeutics, prophylactic or in vivo use.