

DATASHEET

GLIPR2 Rabbit Polyclonal Antibody

CAT. NO. APA18375

KEY FEATURES

Target	GLIPR2	Source / Host	Rabbit
Reactivity	Human	Clonality	Polyclonal
Applications	WB	Conjugation	Unconjugated
Form / Buffer	Liquid in 0.42% Potassium phosphate, 0.87% Sodium chloride, pH 7.3, 30% glycerol, and 0.01% sodium azide.		Storage at-20°C

BACKGROUND

Golgi-associated plant pathogenesis-related protein 1 (GLIPR2), also known as Glioma pathogenesis-related protein 2, GliPR 2. Belongs to the CRISP family Subunit: Homodimer. Interacts with CAV1 Subcellular location: Golgi apparatus membrane Tissue specificity: Highest expression in lung and peripheral leukocytes, and minor expression in liver and kidney

APPLICATION

To ensure optimal assay performance, AREX recommends conducting reagent titration tailored to each testing system for optimal detection results.

WB	1:500 - 1:1000
----	----------------

*Results are sample-specific. Please refer to your local assay conditions and test parameters for reference.

PRODUCT OVERVIEW

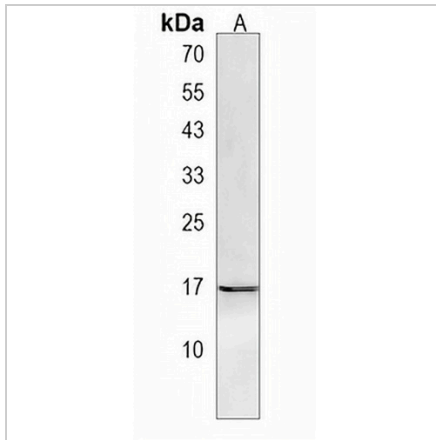
Description	Rabbit polyclonal antibody to GLIPR2
Specificity	Recognizes endogenous levels of GLIPR2 protein.
Antibody Type	Primary antibody
Immunogen	KLH-conjugated synthetic peptide encompassing a sequence within the N-terminal region of human GLIPR2. The exact sequence is proprietary.
Purification	The antibody was purified by immunogen affinity chromatography.
Molecular Weight	Predicted: 17 kD; Observed: 17 kD
Form/Buffer	Liquid in 0.42% Potassium phosphate, 0.87% Sodium chloride, pH 7.3, 30% glycerol, and 0.01% sodium azide.
Alternative Names	C9orf19; GAPR1; Golgi-associated plant pathogenesis-related protein 1; GAPR-1; Golgi-associated PR-1 protein; Glioma pathogenesis-related protein 2; GliPR 2
Gene Symbol	GLIPR2
Entrez Gene	152007(Human)
SwissProt	Q9H4G4(Human)

*AREX continuously optimizes our products. Webpage content may not reflect the latest updates. For inquiries, please contact info@arexbio.com or your local distributor.

*Clone Number, Reactivity, Source/Host and Clonality can be found in the product name and Key Features section above.

DATASHEET**GLIPR2 Rabbit Polyclonal Antibody**

CAT. NO. APA18375

DATA

Western blot analysis of GLIPR2 expression in Y79 (A) whole cell lysates. (Predicted band size: 17 kD; Observed band size: 17 kD)

STORAGE

Store at 4°C short term. For long term storage, store at -20°C, avoiding freeze/thaw cycles.

NOTE

For Research Use Only. Not for diagnostic, therapeutics, prophylactic or in vivo use.