

DATASHEET

OR1F1 Rabbit Polyclonal Antibody

CAT. NO. APA18376

KEY FEATURES

Target	OR1F1	Source / Host	Rabbit
Reactivity	Human	Clonality	Polyclonal
Applications	WB	Conjugation	Unconjugated
Form / Buffer	Liquid in 0.42% Potassium phosphate, 0.87% Sodium chloride, pH 7.3, 30% glycerol, and 0.01% sodium azide.		Storage at -20°C

BACKGROUND

Odorant receptor.

APPLICATION

To ensure optimal assay performance, AREX recommends conducting reagent titration tailored to each testing system for optimal detection results.

WB	1:500 - 1:1000
----	----------------

*Results are sample-specific. Please refer to your local assay conditions and test parameters for reference.

PRODUCT OVERVIEW

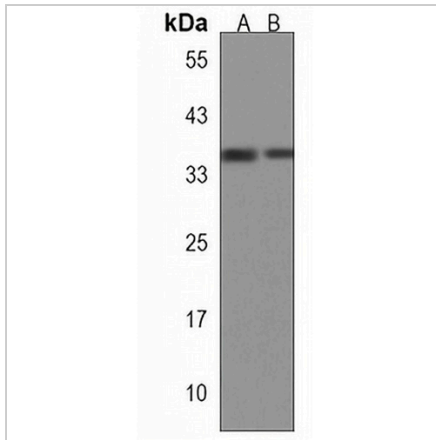
Description	Rabbit polyclonal antibody to OR1F1
Specificity	Recognizes endogenous levels of OR1F1 protein.
Antibody Type	Primary antibody
Immunogen	KLH-conjugated synthetic peptide encompassing a sequence within the C-terminal region of human OR1F1. The exact sequence is proprietary.
Purification	The antibody was purified by immunogen affinity chromatography.
Molecular Weight	Predicted: 34 kD; Observed: 35 kD
Form/Buffer	Liquid in 0.42% Potassium phosphate, 0.87% Sodium chloride, pH 7.3, 30% glycerol, and 0.01% sodium azide.
Alternative Names	OLFMF; OR1F10; OR1F4; OR1F5; OR1F6; OR1F7; OR1F8; OR1F9; Olfactory receptor 1F1; Olfactory receptor 16-35; OR16-35; Olfactory receptor 1F10; Olfactory receptor 1F4; Olfactory receptor 1F5; Olfactory receptor 1F6; Olfactory receptor 1F7; Olfactory receptor 1F8; Olfactory receptor 1F9; Olfactory receptor OR16-4
Gene Symbol	OR1F1
Entrez Gene	4992(Human)
SwissProt	O43749(Human)

*AREX continuously optimizes our products. Webpage content may not reflect the latest updates. For inquiries, please contact info@arexbio.com or your local distributor.

*Clone Number, Reactivity, Source/Host and Clonality can be found in the product name and Key Features section above.

DATASHEET**OR1F1 Rabbit Polyclonal Antibody**

CAT. NO. APA18376

DATA

Western blot analysis of OR1F1 expression in K562 (A), THP1 (B) whole cell lysates. (Predicted band size: 34 kD; Observed band size: 35 kD)

STORAGE

Store at 4°C short term. For long term storage, store at -20°C, avoiding freeze/thaw cycles.

NOTE

For Research Use Only. Not for diagnostic, therapeutics, prophylactic or in vivo use.