

DATASHEET

PCMTD1 Rabbit Polyclonal Antibody

CAT. NO. APA18382

KEY FEATURES

Target	PCMTD1	Source / Host	Rabbit
Reactivity	Human, Mouse	Clonality	Polyclonal
Applications	WB	Conjugation	Unconjugated
Form / Buffer	Liquid in 0.42% Potassium phosphate, 0.87% Sodium chloride, pH 7.3, 30% glycerol, and 0.01% sodium azide.		Storage at -20°C

BACKGROUND

Substrate recognition component of an ECS (Elongin BC-CUL5-SOCS-box protein) E3 ubiquitin ligase complex which mediates the ubiquitination and subsequent proteasomal degradation of target proteins. Specifically binds to the methyltransferase cofactor S-adenosylmethionine (AdoMet) via the N-terminal AdoMet binding motif, but does not display methyltransferase activity. May provide an alternate maintenance pathway for modified proteins by acting as a damage-specific E3 ubiquitin ligase adaptor protein.

APPLICATION

To ensure optimal assay performance, AREX recommends conducting reagent titration tailored to each testing system for optimal detection results.

WB	1:500 - 1:1000
----	----------------

*Results are sample-specific. Please refer to your local assay conditions and test parameters for reference.

PRODUCT OVERVIEW

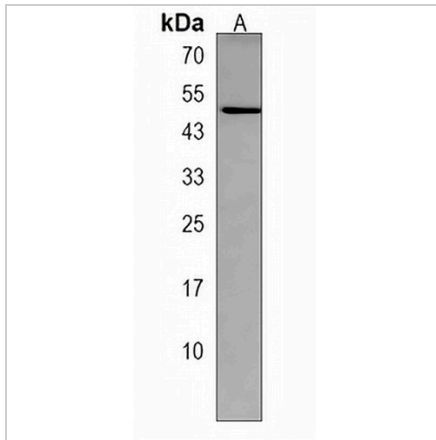
Description	Rabbit polyclonal antibody to PCMTD1
Specificity	Recognizes endogenous levels of PCMTD1 protein.
Antibody Type	Primary antibody
Immunogen	KLH-conjugated synthetic peptide encompassing a sequence within the N-terminal region of human PCMTD1. The exact sequence is proprietary.
Purification	The antibody was purified by immunogen affinity chromatography.
Molecular Weight	Predicted: 40 kD; Observed: 48 kD
Form/Buffer	Liquid in 0.42% Potassium phosphate, 0.87% Sodium chloride, pH 7.3, 30% glycerol, and 0.01% sodium azide.
Alternative Names	Protein-L-isoaspartate O-methyltransferase domain-containing protein 1
Gene Symbol	PCMTD1
Entrez Gene	115294(Human); 319263(Mouse)
SwissProt	Q96MG8(Human); P59913(Mouse)

*AREX continuously optimizes our products. Webpage content may not reflect the latest updates. For inquiries, please contact info@arexbio.com or your local distributor.

*Clone Number, Reactivity, Source/Host and Clonality can be found in the product name and Key Features section above.

DATASHEET**PCMTD1 Rabbit Polyclonal Antibody**

CAT. NO. APA18382

DATA

Western blot analysis of PCMTD1 expression in mouse liver (A) whole cell lysates.
(Predicted band size: 40 kD; Observed band size: 48 kD)

STORAGE

Store at 4°C short term. For long term storage, store at -20°C, avoiding freeze/thaw cycles.

NOTE

For Research Use Only. Not for diagnostic, therapeutics, prophylactic or in vivo use.