

DATASHEET

GPATCH11 Rabbit Polyclonal Antibody

CAT. NO. APA18383

KEY FEATURES

Target	GPATCH11	Source / Host	Rabbit
Reactivity	Human, Mouse, Hamster	Clonality	Polyclonal
Applications	WB	Conjugation	Unconjugated
Form / Buffer	Liquid in 0.42% Potassium phosphate, 0.87% Sodium chloride, pH 7.3, 30% glycerol, and 0.01% sodium azide.		Storage at -20°C

BACKGROUND

G patch domain-containing protein 11 (GPATCH11), also known as Centromeric protein Y, CENP-Y, Coiled-coil domain-containing protein 75. Belongs to the GPATCH11 family Subcellular location: Chromosome, centromere, kinetochore

APPLICATION

To ensure optimal assay performance, AREX recommends conducting reagent titration tailored to each testing system for optimal detection results.

WB	1:500 - 1:1000
----	----------------

*Results are sample-specific. Please refer to your local assay conditions and test parameters for reference.

PRODUCT OVERVIEW

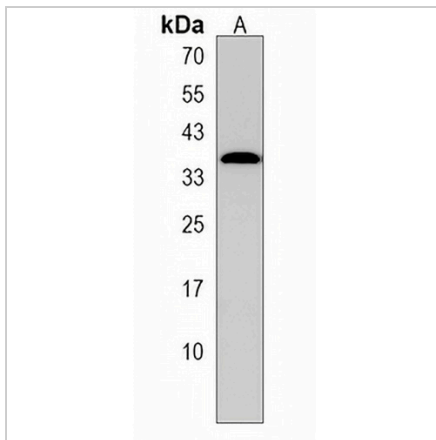
Description	Rabbit polyclonal antibody to GPATCH11
Specificity	Recognizes endogenous levels of GPATCH11 protein.
Antibody Type	Primary antibody
Immunogen	KLH-conjugated synthetic peptide encompassing a sequence within the N-terminal region of human GPATCH11. The exact sequence is proprietary.
Purification	The antibody was purified by immunogen affinity chromatography.
Molecular Weight	Predicted: 33 kD; Observed: 35 kD
Form/Buffer	Liquid in 0.42% Potassium phosphate, 0.87% Sodium chloride, pH 7.3, 30% glycerol, and 0.01% sodium azide.
Alternative Names	CCDC75; G patch domain-containing protein 11; Coiled-coil domain-containing protein 75
Gene Symbol	GPATCH11
Entrez Gene	253635(Human); 53951(Mouse)
SwissProt	Q8N954(Human); Q3UFS4(Mouse)

*AREX continuously optimizes our products. Webpage content may not reflect the latest updates. For inquiries, please contact info@arexbio.com or your local distributor.

*Clone Number, Reactivity, Source/Host and Clonality can be found in the product name and Key Features section above.

DATASHEET**GPATCH11 Rabbit Polyclonal Antibody**

CAT. NO. APA18383

DATA

Western blot analysis of GPATCH11 expression in NIH3T3 (A) whole cell lysates. (Predicted band size: 33 kD; Observed band size: 35 kD)

STORAGE

Store at 4°C short term. For long term storage, store at -20°C, avoiding freeze/thaw cycles.

NOTE

For Research Use Only. Not for diagnostic, therapeutics, prophylactic or in vivo use.