

DATASHEET

LIPT2 Rabbit Polyclonal Antibody

CAT. NO. APA18384

KEY FEATURES

Target	LIPT2	Source / Host	Rabbit
Reactivity	Human	Clonality	Polyclonal
Applications	WB	Conjugation	Unconjugated
Form / Buffer	Liquid in 0.42% Potassium phosphate, 0.87% Sodium chloride, pH 7.3, 30% glycerol, and 0.01% sodium azide.		Storage at-20°C

BACKGROUND

Catalyzes the transfer of endogenously produced octanoic acid from octanoyl-acyl-carrier-protein (octanoyl-ACP) onto the lipoyl domains of lipoate-dependent enzymes such as the protein H of the glycine cleavage system (GCSH) onto the lipoyl domains of lipoate-dependent enzymes such as the protein H of the glycine cleavage system (GCSH) . Lipoyl-ACP can also act as a substrate although octanoyl-ACP is likely to be the physiological substrate .

APPLICATION

To ensure optimal assay performance, AREX recommends conducting reagent titration tailored to each testing system for optimal detection results.

WB	1:500 - 1:1000
----	----------------

*Results are sample-specific. Please refer to your local assay conditions and test parameters for reference.

PRODUCT OVERVIEW

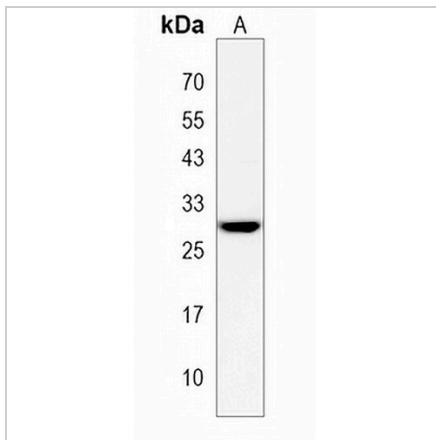
Description	Rabbit polyclonal antibody to LIPT2
Specificity	Recognizes endogenous levels of LIPT2 protein.
Antibody Type	Primary antibody
Immunogen	KLH-conjugated synthetic peptide encompassing a sequence within the N-terminal region of human LIPT2. The exact sequence is proprietary.
Purification	The antibody was purified by immunogen affinity chromatography.
Molecular Weight	Predicted: 25 kD; Observed: 28 kD
Form/Buffer	Liquid in 0.42% Potassium phosphate, 0.87% Sodium chloride, pH 7.3, 30% glycerol, and 0.01% sodium azide.
Alternative Names	Putative lipoyltransferase 2, mitochondrial; Lipoate-protein ligase B; Lipoyl/octanoyl transferase; Octanoyl-[acyl-carrier-protein]-protein N-octanoyltransferase
Gene Symbol	LIPT2
Entrez Gene	387787(Human)
SwissProt	A6NK58(Human)

*AREX continuously optimizes our products. Webpage content may not reflect the latest updates. For inquiries, please contact info@arexbio.com or your local distributor.

*Clone Number, Reactivity, Source/Host and Clonality can be found in the product name and Key Features section above.

DATASHEET**LIPT2 Rabbit Polyclonal Antibody**

CAT. NO. APA18384

DATA

Western blot analysis of LIPT2 expression in MCF7 (A) whole cell lysates. (Predicted band size: 25 kD; Observed band size: 28 kD)

STORAGE

Store at 4°C short term. For long term storage, store at -20°C, avoiding freeze/thaw cycles.

NOTE

For Research Use Only. Not for diagnostic, therapeutics, prophylactic or in vivo use.