

DATASHEET

PPIL2 Rabbit Polyclonal Antibody

CAT. NO. APA18389

KEY FEATURES

Target	PPIL2	Source / Host	Rabbit
Reactivity	Human	Clonality	Polyclonal
Applications	WB	Conjugation	Unconjugated
Form / Buffer	Liquid in 0.42% Potassium phosphate, 0.87% Sodium chloride, pH 7.3, 30% glycerol, and 0.01% sodium azide.		Storage at -20°C

BACKGROUND

Has a ubiquitin-protein ligase activity acting as an E3 ubiquitin protein ligase or as an ubiquitin-ubiquitin ligase promoting elongation of ubiquitin chains on substrates. By mediating 'Lys-48'-linked polyubiquitination of proteins could target them for proteasomal degradation. May also function as a chaperone, playing a role in transport to the cell membrane of BSG/Basigin for instance. Probable inactive PPIase with no peptidyl-prolyl cis-trans isomerase activity. As a component of the minor spliceosome, involved in the splicing of U12-type introns in pre-mRNAs (Probable).

APPLICATION

To ensure optimal assay performance, AREX recommends conducting reagent titration tailored to each testing system for optimal detection results.

WB	1:500 - 1:1000
----	----------------

*Results are sample-specific. Please refer to your local assay conditions and test parameters for reference.

PRODUCT OVERVIEW

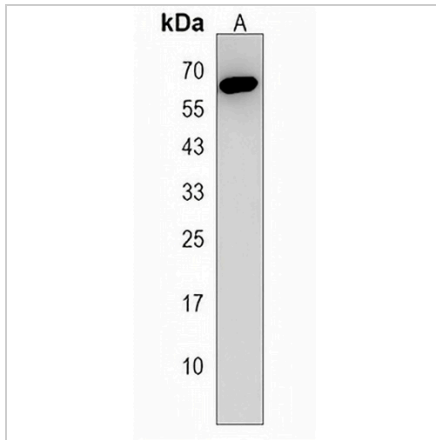
Description	Rabbit polyclonal antibody to PPIL2
Specificity	Recognizes endogenous levels of PPIL2 protein.
Antibody Type	Primary antibody
Immunogen	KLH-conjugated synthetic peptide encompassing a sequence within the C-terminal region of human PPIL2. The exact sequence is proprietary.
Purification	The antibody was purified by immunogen affinity chromatography.
Molecular Weight	Predicted: 58 kD; Observed: 65 kD
Form/Buffer	Liquid in 0.42% Potassium phosphate, 0.87% Sodium chloride, pH 7.3, 30% glycerol, and 0.01% sodium azide.
Alternative Names	Peptidyl-prolyl cis-trans isomerase-like 2; PPIase; Cyclophilin-60; Cyclophilin-like protein Cyp-60; Rotamase PPIL2
Gene Symbol	PPIL2
Entrez Gene	23759(Human)
SwissProt	Q13356(Human)

*AREX continuously optimizes our products. Webpage content may not reflect the latest updates. For inquiries, please contact info@arexbio.com or your local distributor.

*Clone Number, Reactivity, Source/Host and Clonality can be found in the product name and Key Features section above.

DATASHEET**PPIL2 Rabbit Polyclonal Antibody**

CAT. NO. APA18389

DATA

Western blot analysis of PPIL2 expression in 293 (A) whole cell lysates. (Predicted band size: 58 kD; Observed band size: 65 kD)

STORAGE

Store at 4°C short term. For long term storage, store at -20°C, avoiding freeze/thaw cycles.

NOTE

For Research Use Only. Not for diagnostic, therapeutics, prophylactic or in vivo use.