

DATASHEET

NKX6-2 Rabbit Polyclonal Antibody

CAT. NO. APA18398

KEY FEATURES

Target	NKX6-2	Source / Host	Rabbit
Reactivity	Human	Clonality	Polyclonal
Applications	WB	Conjugation	Unconjugated
Form / Buffer	Liquid in 0.42% Potassium phosphate, 0.87% Sodium chloride, pH 7.3, 30% glycerol, and 0.01% sodium azide.		Storage at-20°C

BACKGROUND

Transcription factor with repressor activity involved in the regulation of axon-glia interactions at myelin paranodes in oligodendrocytes. Binds to the consensus DNA sequence 5'-(AT)TTAATGA-3'. In oligodendrocytes, binds to MBP and PLP1 promoter regions.

APPLICATION

To ensure optimal assay performance, AREX recommends conducting reagent titration tailored to each testing system for optimal detection results.

WB	1:500 - 1:1000
----	----------------

*Results are sample-specific. Please refer to your local assay conditions and test parameters for reference.

PRODUCT OVERVIEW

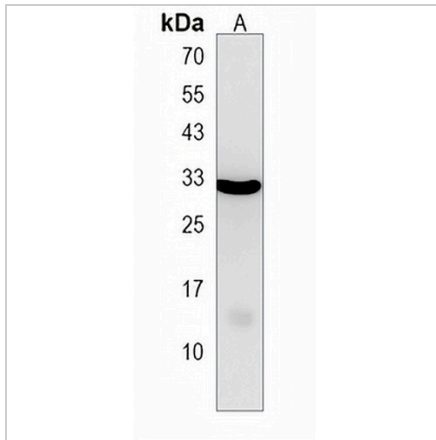
Description	Rabbit polyclonal antibody to NKX6-2
Specificity	Recognizes endogenous levels of NKX6-2 protein.
Antibody Type	Primary antibody
Immunogen	KLH-conjugated synthetic peptide encompassing a sequence within the N-terminal region of human NKX6-2. The exact sequence is proprietary.
Purification	The antibody was purified by immunogen affinity chromatography.
Molecular Weight	Predicted: 29 kD; Observed: 29 kD
Form/Buffer	Liquid in 0.42% Potassium phosphate, 0.87% Sodium chloride, pH 7.3, 30% glycerol, and 0.01% sodium azide.
Alternative Names	GTX; NKX6B; Homeobox protein Nkx-6.2; Homeobox protein NK-6 homolog B
Gene Symbol	NKX6-2
Entrez Gene	84504(Human)
SwissProt	Q9C056(Human)

*AREX continuously optimizes our products. Webpage content may not reflect the latest updates. For inquiries, please contact info@arexbio.com or your local distributor.

*Clone Number, Reactivity, Source/Host and Clonality can be found in the product name and Key Features section above.

DATASHEET**NKX6-2 Rabbit Polyclonal Antibody**

CAT. NO. APA18398

DATA

Western blot analysis of NKX6-2 expression in K562 (A) whole cell lysates. (Predicted band size: 29 kD; Observed band size: 29 kD)

STORAGE

Store at 4°C short term. For long term storage, store at -20°C, avoiding freeze/thaw cycles.

NOTE

For Research Use Only. Not for diagnostic, therapeutics, prophylactic or in vivo use.