

DATASHEET

SIRPD Rabbit Polyclonal Antibody

CAT. NO. APA18415

KEY FEATURES

Target	SIRPD	Source / Host	Rabbit
Reactivity	Human	Clonality	Polyclonal
Applications	WB	Conjugation	Unconjugated
Form / Buffer	Liquid in 0.42% Potassium phosphate, 0.87% Sodium chloride, pH 7.3, 30% glycerol, and 0.01% sodium azide.		Storage at -20°C

BACKGROUND

Signal-regulatory protein delta (SIRPD), also known as Protein tyrosine phosphatase non-receptor type substrate 1-like 2. Subcellular location: Secreted

APPLICATION

To ensure optimal assay performance, AREX recommends conducting reagent titration tailored to each testing system for optimal detection results.

WB	1:500 - 1:1000
----	----------------

*Results are sample-specific. Please refer to your local assay conditions and test parameters for reference.

PRODUCT OVERVIEW

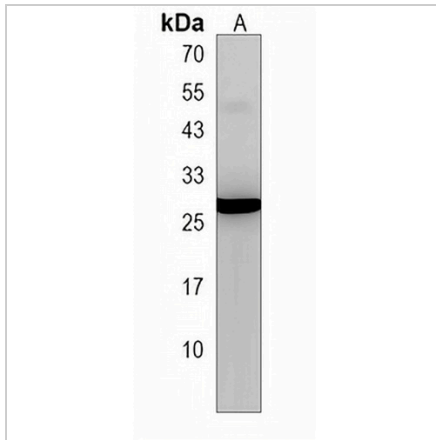
Description	Rabbit polyclonal antibody to SIRPD
Specificity	Recognizes endogenous levels of SIRPD protein.
Antibody Type	Primary antibody
Immunogen	KLH-conjugated synthetic peptide encompassing a sequence within the Central region of human SIRPD. The exact sequence is proprietary.
Purification	The antibody was purified by immunogen affinity chromatography.
Molecular Weight	Predicted: 21 kD; Observed: 27 kD
Form/Buffer	Liquid in 0.42% Potassium phosphate, 0.87% Sodium chloride, pH 7.3, 30% glycerol, and 0.01% sodium azide.
Alternative Names	PTPNS1L2; Signal-regulatory protein delta; SIRP-delta; Protein tyrosine phosphatase non-receptor type substrate 1-like 2
Gene Symbol	SIRPD
Entrez Gene	128646(Human)
SwissProt	Q9H106(Human)

*AREX continuously optimizes our products. Webpage content may not reflect the latest updates. For inquiries, please contact info@arexbio.com or your local distributor.

*Clone Number, Reactivity, Source/Host and Clonality can be found in the product name and Key Features section above.

DATASHEET**SIRPD Rabbit Polyclonal Antibody**

CAT. NO. APA18415

DATA

Western blot analysis of SIRPD expression in 293 (A) whole cell lysates. (Predicted band size: 21 kD; Observed band size: 27 kD)

STORAGE

Store at 4°C short term. For long term storage, store at -20°C, avoiding freeze/thaw cycles.

NOTE

For Research Use Only. Not for diagnostic, therapeutics, prophylactic or in vivo use.