

DATASHEET

POMZP3 Rabbit Polyclonal Antibody

CAT. NO. APA18421

KEY FEATURES

Target	POMZP3	Source / Host	Rabbit
Reactivity	Human	Clonality	Polyclonal
Applications	WB	Conjugation	Unconjugated
Form / Buffer	Liquid in 0.42% Potassium phosphate, 0.87% Sodium chloride, pH 7.3, 30% glycerol, and 0.01% sodium azide.		Storage at -20°C

BACKGROUND

This gene appears to have resulted from a fusion of DNA sequences derived from 2 distinct loci, specifically through the duplication of two internal exons from the POM121 gene and four 3' exons from the ZP3 gene. The 5' end of this gene is similar to the 5' coding region of the POM121 gene which encodes an integral nuclear pore membrane protein. However, the protein encoded by this gene lacks the nuclear pore localization motif. The 3' end of this gene is similar to the last 4 exons of the zona pellucida glycoprotein 3 (ZP3) gene and the encoded protein retains one zona pellucida domain. Multiple protein isoforms are encoded by transcript variants of this gene.

APPLICATION

To ensure optimal assay performance, AREX recommends conducting reagent titration tailored to each testing system for optimal detection results.

WB	1:500 - 1:1000
----	----------------

*Results are sample-specific. Please refer to your local assay conditions and test parameters for reference.

PRODUCT OVERVIEW

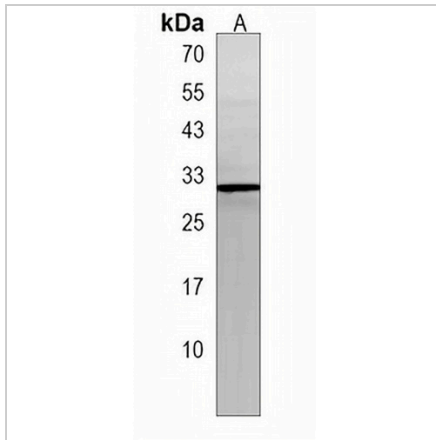
Description	Rabbit polyclonal antibody to POMZP3
Specificity	Recognizes endogenous levels of POMZP3 protein.
Antibody Type	Primary antibody
Immunogen	KLH-conjugated synthetic peptide encompassing a sequence within the N-terminal region of human POMZP3. The exact sequence is proprietary.
Purification	The antibody was purified by immunogen affinity chromatography.
Molecular Weight	Predicted: 20 kD; Observed: 31 kD
Form/Buffer	Liquid in 0.42% Potassium phosphate, 0.87% Sodium chloride, pH 7.3, 30% glycerol, and 0.01% sodium azide.
Alternative Names	POM121 and ZP3 fusion protein; POM-ZP3
Gene Symbol	POMZP3
Entrez Gene	22932(Human)
SwissProt	Q6PJE2(Human)

*AREX continuously optimizes our products. Webpage content may not reflect the latest updates. For inquiries, please contact info@arexbio.com or your local distributor.

*Clone Number, Reactivity, Source/Host and Clonality can be found in the product name and Key Features section above.

DATASHEET**POMZP3 Rabbit Polyclonal Antibody**

CAT. NO. APA18421

DATA

Western blot analysis of POMZP3 expression in U251MG (A) whole cell lysates. (Predicted band size: 20 kD; Observed band size: 31 kD)

STORAGE

Store at 4°C short term. For long term storage, store at -20°C, avoiding freeze/thaw cycles.

NOTE

For Research Use Only. Not for diagnostic, therapeutics, prophylactic or in vivo use.