

DATASHEET

FBXL19 Rabbit Polyclonal Antibody

CAT. NO. APA18429

KEY FEATURES

Target	FBXL19	Source / Host	Rabbit
Reactivity	Human	Clonality	Polyclonal
Applications	WB	Conjugation	Unconjugated
Form / Buffer	Liquid in 0.42% Potassium phosphate, 0.87% Sodium chloride, pH 7.3, 30% glycerol, and 0.01% sodium azide.		Storage at -20°C

BACKGROUND

Substrate-recognition component of the SCF (SKP1-CUL1-F-box protein)-type E3 ubiquitin ligase complex that plays a role in different processes including cell migration, cell proliferation or cytoskeletal reorganization -type E3 ubiquitin ligase complex that plays a role in different processes including cell migration, cell proliferation or cytoskeletal reorganization . Mediates RHOA ubiquitination and degradation in a ERK2-dependent manner . Induces RAC1 and RAC3 degradation by the proteasome system and thereby regulates TGFβ1-induced E-cadherin down-regulation and cell migration . Also mediates ubiquitination and degradation of IL-33-induced receptor IL1RL1 and subsequently blocks IL-33-mediated apoptosis .

APPLICATION

To ensure optimal assay performance, AREX recommends conducting reagent titration tailored to each testing system for optimal detection results.

WB	1:500 - 1:1000
----	----------------

*Results are sample-specific. Please refer to your local assay conditions and test parameters for reference.

PRODUCT OVERVIEW

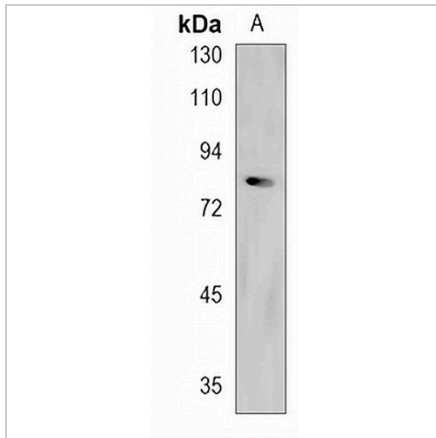
Description	Rabbit polyclonal antibody to FBXL19
Specificity	Recognizes endogenous levels of FBXL19 protein.
Antibody Type	Primary antibody
Immunogen	KLH-conjugated synthetic peptide encompassing a sequence within the C-terminal region of human FBXL19. The exact sequence is proprietary.
Purification	The antibody was purified by immunogen affinity chromatography.
Molecular Weight	Predicted: 75 kD; Observed: 76 kD
Form/Buffer	Liquid in 0.42% Potassium phosphate, 0.87% Sodium chloride, pH 7.3, 30% glycerol, and 0.01% sodium azide.
Alternative Names	FBL19; F-box/LRR-repeat protein 19; F-box and leucine-rich repeat protein 19
Gene Symbol	FBXL19
Entrez Gene	54620(Human)
SwissProt	Q6PCT2(Human)

*AREX continuously optimizes our products. Webpage content may not reflect the latest updates. For inquiries, please contact info@arexbio.com or your local distributor.

*Clone Number, Reactivity, Source/Host and Clonality can be found in the product name and Key Features section above.

DATASHEET**FBXL19 Rabbit Polyclonal Antibody**

CAT. NO. APA18429

DATA

Western blot analysis of FBXL19 expression in A549 (A) whole cell lysates. (Predicted band size: 75 kD; Observed band size: 76 kD)

STORAGE

Store at 4°C short term. For long term storage, store at -20°C, avoiding freeze/thaw cycles.

NOTE

For Research Use Only. Not for diagnostic, therapeutics, prophylactic or in vivo use.