

**DATASHEET**

**GAGE3 Rabbit Polyclonal Antibody**

CAT. NO. APA18431

**KEY FEATURES**

Target	GAGE3	Source / Host	Rabbit
Reactivity	Human	Clonality	Polyclonal
Applications	WB	Conjugation	Unconjugated
Form / Buffer	Liquid in 0.42% Potassium phosphate, 0.87% Sodium chloride, pH 7.3, 30% glycerol, and 0.01% sodium azide.		Storage at -20°C

**BACKGROUND**

DISCONTINUED: This record has been withdrawn by NCBI staff. This record was defined by U19144.1:AAA82746.1, which represents a cloning artifact.

**APPLICATION**

To ensure optimal assay performance, AREX recommends conducting reagent titration tailored to each testing system for optimal detection results.

WB	1:500 - 1:1000
----	----------------

\*Results are sample-specific. Please refer to your local assay conditions and test parameters for reference.

**PRODUCT OVERVIEW**

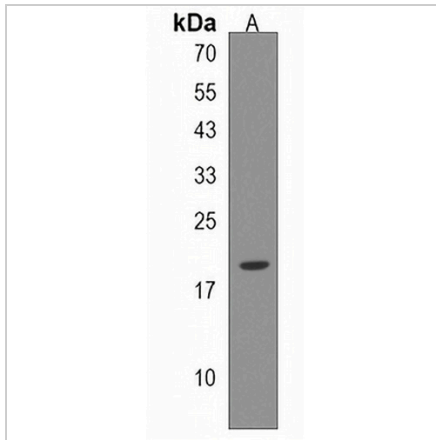
Description	Rabbit polyclonal antibody to GAGE3
Specificity	Recognizes endogenous levels of GAGE3 protein.
Antibody Type	Primary antibody
Immunogen	KLH-conjugated synthetic peptide encompassing a sequence within the N-terminal region of human GAGE3. The exact sequence is proprietary.
Purification	The antibody was purified by immunogen affinity chromatography.
Molecular Weight	Predicted: \; Observed: 19 kD
Form/Buffer	Liquid in 0.42% Potassium phosphate, 0.87% Sodium chloride, pH 7.3, 30% glycerol, and 0.01% sodium azide.
Alternative Names	G antigen 3; GAGE-3; Cancer/testis antigen 4.3; CT4.3
Gene Symbol	GAGE3
Entrez Gene	2575(Human)
SwissProt	Q13067(Human)

\*AREX continuously optimizes our products. Webpage content may not reflect the latest updates. For inquiries, please contact [info@arexbio.com](mailto:info@arexbio.com) or your local distributor.

\*Clone Number, Reactivity, Source/Host and Clonality can be found in the product name and Key Features section above.

**DATASHEET****GAGE3 Rabbit Polyclonal Antibody**

CAT. NO. APA18431

**DATA**

Western blot analysis of GAGE3 expression in 293 (A) whole cell lysates. (Predicted band size: \; Observed band size: 19 kD)

**STORAGE**

Store at 4°C short term. For long term storage, store at -20°C, avoiding freeze/thaw cycles.

**NOTE**

For Research Use Only. Not for diagnostic, therapeutics, prophylactic or in vivo use.