

DATASHEET

GRWD1 Rabbit Polyclonal Antibody

CAT. NO. APA18432

KEY FEATURES

Target	GRWD1	Source / Host	Rabbit
Reactivity	Human	Clonality	Polyclonal
Applications	WB	Conjugation	Unconjugated
Form / Buffer	Liquid in 0.42% Potassium phosphate, 0.87% Sodium chloride, pH 7.3, 30% glycerol, and 0.01% sodium azide.		Storage at-20°C

BACKGROUND

Histone binding-protein that regulates chromatin dynamics and loading of minichromosome maintenance (MCM) complex at replication origins, possibly by promoting chromatin openness complex at replication origins, possibly by promoting chromatin openness . Plays a role in ribosomal biogenesis .

APPLICATION

To ensure optimal assay performance, AREX recommends conducting reagent titration tailored to each testing system for optimal detection results.

WB	1:500 - 1:1000
----	----------------

*Results are sample-specific. Please refer to your local assay conditions and test parameters for reference.

PRODUCT OVERVIEW

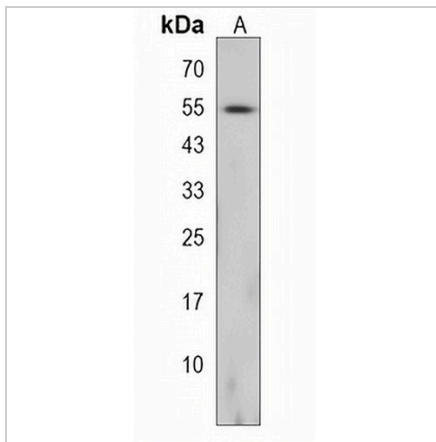
Description	Rabbit polyclonal antibody to GRWD1
Specificity	Recognizes endogenous levels of GRWD1 protein.
Antibody Type	Primary antibody
Immunogen	KLH-conjugated synthetic peptide encompassing a sequence within the Central region of human GRWD1. The exact sequence is proprietary.
Purification	The antibody was purified by immunogen affinity chromatography.
Molecular Weight	Predicted: 49 kD; Observed: 55 kD
Form/Buffer	Liquid in 0.42% Potassium phosphate, 0.87% Sodium chloride, pH 7.3, 30% glycerol, and 0.01% sodium azide.
Alternative Names	GRWD; KIAA1942; WDR28; Glutamate-rich WD repeat-containing protein 1
Gene Symbol	GRWD1
Entrez Gene	83743(Human)
SwissProt	Q9BQ67(Human)

*AREX continuously optimizes our products. Webpage content may not reflect the latest updates. For inquiries, please contact info@arexbio.com or your local distributor.

*Clone Number, Reactivity, Source/Host and Clonality can be found in the product name and Key Features section above.

DATASHEET**GRWD1 Rabbit Polyclonal Antibody**

CAT. NO. APA18432

DATA

Western blot analysis of GRWD1 expression in 293 (A) whole cell lysates. (Predicted band size: 49 kD; Observed band size: 55 kD)

STORAGE

Store at 4°C short term. For long term storage, store at -20°C, avoiding freeze/thaw cycles.

NOTE

For Research Use Only. Not for diagnostic, therapeutics, prophylactic or in vivo use.