

DATASHEET

EXTL1 Rabbit Polyclonal Antibody

CAT. NO. APA18436

KEY FEATURES

Target	EXTL1	Source / Host	Rabbit
Reactivity	Human, Mouse	Clonality	Polyclonal
Applications	WB	Conjugation	Unconjugated
Form / Buffer	Liquid in 0.42% Potassium phosphate, 0.87% Sodium chloride, pH 7.3, 30% glycerol, and 0.01% sodium azide.		Storage at-20°C

BACKGROUND

Glycosyltransferase required for the biosynthesis of heparan-sulfate (HS) . Transfers N-acetyl-alpha-D-glucosamine to the nascent HS chain (GlcNAcT-II activity) . Appears to lack GlcNAc I and GlcAT-II activities .

APPLICATION

To ensure optimal assay performance, AREX recommends conducting reagent titration tailored to each testing system for optimal detection results.

WB	1:500 - 1:1000
----	----------------

*Results are sample-specific. Please refer to your local assay conditions and test parameters for reference.

PRODUCT OVERVIEW

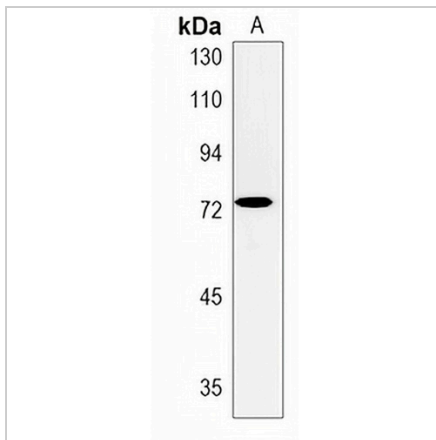
Description	Rabbit polyclonal antibody to EXTL1
Specificity	Recognizes endogenous levels of EXTL1 protein.
Antibody Type	Primary antibody
Immunogen	KLH-conjugated synthetic peptide encompassing a sequence within the C-terminal region of human EXTL1. The exact sequence is proprietary.
Purification	The antibody was purified by immunogen affinity chromatography.
Molecular Weight	Predicted: 74 kD; Observed: 72 kD
Form/Buffer	Liquid in 0.42% Potassium phosphate, 0.87% Sodium chloride, pH 7.3, 30% glycerol, and 0.01% sodium azide.
Alternative Names	EXTL; Exostosin-like 1; Exostosin-L; Glucuronosyl-N-acetylglucosaminyl-proteoglycan 4-alpha-N-acetylglucosaminyltransferase; Multiple exostosis-like protein
Gene Symbol	EXTL1
Entrez Gene	2134(Human); 56219(Mouse)
SwissProt	Q92935(Human); Q9JKV7(Mouse)

*AREX continuously optimizes our products. Webpage content may not reflect the latest updates. For inquiries, please contact info@arexbio.com or your local distributor.

*Clone Number, Reactivity, Source/Host and Clonality can be found in the product name and Key Features section above.

DATASHEET**EXTL1 Rabbit Polyclonal Antibody**

CAT. NO. APA18436

DATA

Western blot analysis of EXTL1 expression in mouse testis (A) whole cell lysates.
(Predicted band size: 74 kD; Observed band size: 72 kD)

STORAGE

Store at 4°C short term. For long term storage, store at -20°C, avoiding freeze/thaw cycles.

NOTE

For Research Use Only. Not for diagnostic, therapeutics, prophylactic or in vivo use.