

DATASHEET

HEPHL1 Rabbit Polyclonal Antibody

CAT. NO. APA18446

KEY FEATURES

Target	HEPHL1	Source / Host	Rabbit
Reactivity	Human	Clonality	Polyclonal
Applications	WB	Conjugation	Unconjugated
Form / Buffer	Liquid in 0.42% Potassium phosphate, 0.87% Sodium chloride, pH 7.3, 30% glycerol, and 0.01% sodium azide.		Storage at -20°C

BACKGROUND

Is a copper-binding glycoprotein with ferroxidase activity. It oxidizes Fe(2+) to Fe(3+) without releasing radical oxygen species to Fe(3+) without releasing radical oxygen species . May be involved in the regulation of intracellular iron content .

APPLICATION

To ensure optimal assay performance, AREX recommends conducting reagent titration tailored to each testing system for optimal detection results.

WB	1:500 - 1:1000
----	----------------

*Results are sample-specific. Please refer to your local assay conditions and test parameters for reference.

PRODUCT OVERVIEW

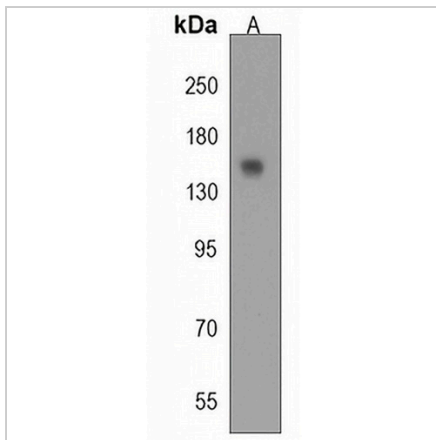
Description	Rabbit polyclonal antibody to HEPHL1
Specificity	Recognizes endogenous levels of HEPHL1 protein.
Antibody Type	Primary antibody
Immunogen	KLH-conjugated synthetic peptide encompassing a sequence within the N-terminal region of human HEPHL1. The exact sequence is proprietary.
Purification	The antibody was purified by immunogen affinity chromatography.
Molecular Weight	Predicted: 131 kD; Observed: 150 kD
Form/Buffer	Liquid in 0.42% Potassium phosphate, 0.87% Sodium chloride, pH 7.3, 30% glycerol, and 0.01% sodium azide.
Alternative Names	Hephaestin-like protein 1
Gene Symbol	HEPHL1
Entrez Gene	341208(Human)
SwissProt	Q6MZM0(Human)

*AREX continuously optimizes our products. Webpage content may not reflect the latest updates. For inquiries, please contact info@arexbio.com or your local distributor.

*Clone Number, Reactivity, Source/Host and Clonality can be found in the product name and Key Features section above.

DATASHEET**HEPHL1 Rabbit Polyclonal Antibody**

CAT. NO. APA18446

DATA

Western blot analysis of HEPHL1 expression in K562 (A) whole cell lysates. (Predicted band size: 131 kD; Observed band size: 150 kD)

STORAGE

Store at 4°C short term. For long term storage, store at -20°C, avoiding freeze/thaw cycles.

NOTE

For Research Use Only. Not for diagnostic, therapeutics, prophylactic or in vivo use.