

DATASHEET

MPPE1 Rabbit Polyclonal Antibody

CAT. NO. APA18451

KEY FEATURES

Target	MPPE1	Source / Host	Rabbit
Reactivity	Human	Clonality	Polyclonal
Applications	WB	Conjugation	Unconjugated
Form / Buffer	Liquid in 0.42% Potassium phosphate, 0.87% Sodium chloride, pH 7.3, 30% glycerol, and 0.01% sodium azide.		Storage at-20°C

BACKGROUND

Metallophosphoesterase that catalyzes the removal of a side-chain ethanolamine-phosphate (EtNP) from the second mannose of the GPI-anchor protein intermediate from the second mannose of the GPI-anchor protein intermediate . Participates in the glycan remodeling steps of GPI-anchor maturation to allow an efficient transport of GPI-anchor proteins from the endoplasmic reticulum to the Golgi .

APPLICATION

To ensure optimal assay performance, AREX recommends conducting reagent titration tailored to each testing system for optimal detection results.

WB	1:500 - 1:1000
----	----------------

*Results are sample-specific. Please refer to your local assay conditions and test parameters for reference.

PRODUCT OVERVIEW

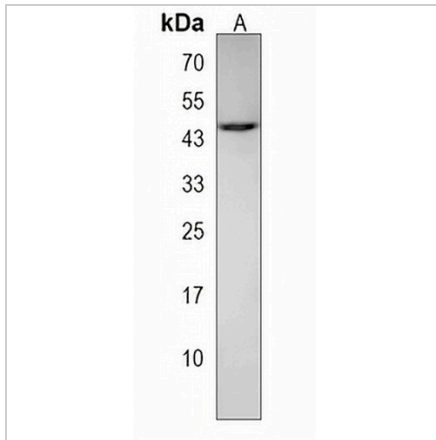
Description	Rabbit polyclonal antibody to MPPE1
Specificity	Recognizes endogenous levels of MPPE1 protein.
Antibody Type	Primary antibody
Immunogen	KLH-conjugated synthetic peptide encompassing a sequence within the C-terminal region of human MPPE1. The exact sequence is proprietary.
Purification	The antibody was purified by immunogen affinity chromatography.
Molecular Weight	Predicted: 45 kD; Observed: 45 kD
Form/Buffer	Liquid in 0.42% Potassium phosphate, 0.87% Sodium chloride, pH 7.3, 30% glycerol, and 0.01% sodium azide.
Alternative Names	PGAP5; Metallophosphoesterase 1; Post-GPI attachment to proteins factor 5
Gene Symbol	MPPE1
Entrez Gene	65258(Human)
SwissProt	Q53F39(Human)

*AREX continuously optimizes our products. Webpage content may not reflect the latest updates. For inquiries, please contact info@arexbio.com or your local distributor.

*Clone Number, Reactivity, Source/Host and Clonality can be found in the product name and Key Features section above.

DATASHEET**MPPE1 Rabbit Polyclonal Antibody**

CAT. NO. APA18451

DATA

Western blot analysis of MPPE1 expression in NCIH292 (A) whole cell lysates. (Predicted band size: 45 kD; Observed band size: 45 kD)

STORAGE

Store at 4°C short term. For long term storage, store at -20°C, avoiding freeze/thaw cycles.

NOTE

For Research Use Only. Not for diagnostic, therapeutics, prophylactic or in vivo use.