

DATASHEET

SAP30L Rabbit Polyclonal Antibody

CAT. NO. APA18455

KEY FEATURES

Target	SAP30L	Source / Host	Rabbit
Reactivity	Human	Clonality	Polyclonal
Applications	WB	Conjugation	Unconjugated
Form / Buffer	Liquid in 0.42% Potassium phosphate, 0.87% Sodium chloride, pH 7.3, 30% glycerol, and 0.01% sodium azide.		Storage at -20°C

BACKGROUND

Functions as a transcription repressor, probably via its interaction with histone deacetylase complexes . Involved in the functional recruitment of the class 1 Sin3-histone deacetylase complex (HDAC) to the nucleolus . Binds DNA, apparently without sequence-specificity, and binds bound double-stranded DNA . Binds phosphoinositol phosphates (phosphoinositol 3-phosphate, phosphoinositol 4-phosphate and phosphoinositol 5-phosphate) via the same basic sequence motif that mediates DNA binding and nuclear import .

APPLICATION

To ensure optimal assay performance, AREX recommends conducting reagent titration tailored to each testing system for optimal detection results.

WB	1:500 - 1:1000
----	----------------

*Results are sample-specific. Please refer to your local assay conditions and test parameters for reference.

PRODUCT OVERVIEW

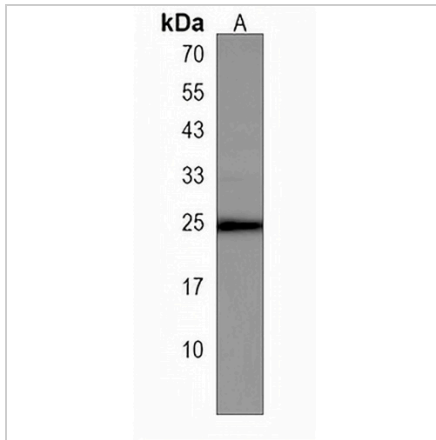
Description	Rabbit polyclonal antibody to SAP30L
Specificity	Recognizes endogenous levels of SAP30L protein.
Antibody Type	Primary antibody
Immunogen	KLH-conjugated synthetic peptide encompassing a sequence within the Central region of human SAP30L. The exact sequence is proprietary.
Purification	The antibody was purified by immunogen affinity chromatography.
Molecular Weight	Predicted: 20 kD; Observed: 25 kD
Form/Buffer	Liquid in 0.42% Potassium phosphate, 0.87% Sodium chloride, pH 7.3, 30% glycerol, and 0.01% sodium azide.
Alternative Names	NS4ATP2; Histone deacetylase complex subunit SAP30L; HCV non-structural protein 4A-transactivated protein 2; Sin3 corepressor complex subunit SAP30L; Sin3-associated protein p30-like
Gene Symbol	SAP30L
Entrez Gene	79685(Human)
SwissProt	Q9HAJ7(Human)

*AREX continuously optimizes our products. Webpage content may not reflect the latest updates. For inquiries, please contact info@arexbio.com or your local distributor.

*Clone Number, Reactivity, Source/Host and Clonality can be found in the product name and Key Features section above.

DATASHEET**SAP30L Rabbit Polyclonal Antibody**

CAT. NO. APA18455

DATA

Western blot analysis of SAP30L expression in MCF7 (A) whole cell lysates. (Predicted band size: 20 kD; Observed band size: 25 kD)

STORAGE

Store at 4°C short term. For long term storage, store at -20°C, avoiding freeze/thaw cycles.

NOTE

For Research Use Only. Not for diagnostic, therapeutics, prophylactic or in vivo use.