

DATASHEET

PKD2L2 Rabbit Polyclonal Antibody

CAT. NO. APA18461

KEY FEATURES

Target	PKD2L2	Source / Host	Rabbit
Reactivity	Human	Clonality	Polyclonal
Applications	WB	Conjugation	Unconjugated
Form / Buffer	Liquid in 0.42% Potassium phosphate, 0.87% Sodium chloride, pH 7.3, 30% glycerol, and 0.01% sodium azide.		Storage at -20°C

BACKGROUND

Exhibits a lower single conductance but no spontaneous channel activity . May function as a regulator of calcium channels or a channel component involving Ca²⁺ homeostasis .

APPLICATION

To ensure optimal assay performance, AREX recommends conducting reagent titration tailored to each testing system for optimal detection results.

WB	1:500 - 1:1000
----	----------------

*Results are sample-specific. Please refer to your local assay conditions and test parameters for reference.

PRODUCT OVERVIEW

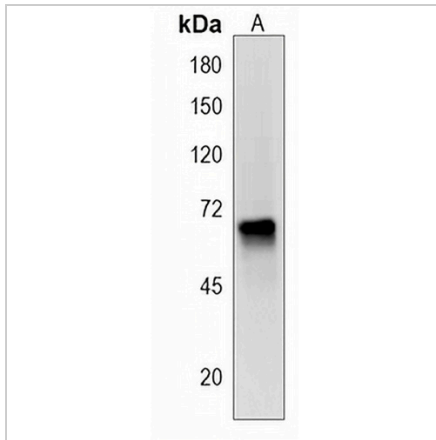
Description	Rabbit polyclonal antibody to PKD2L2
Specificity	Recognizes endogenous levels of PKD2L2 protein.
Antibody Type	Primary antibody
Immunogen	KLH-conjugated synthetic peptide encompassing a sequence within the Central region of human PKD2L2. The exact sequence is proprietary.
Purification	The antibody was purified by immunogen affinity chromatography.
Molecular Weight	Predicted: 73 kD; Observed: 70 kD
Form/Buffer	Liquid in 0.42% Potassium phosphate, 0.87% Sodium chloride, pH 7.3, 30% glycerol, and 0.01% sodium azide.
Alternative Names	Polycystic kidney disease 2-like 2 protein; Polycystin-2L2; Polycystin-L2
Gene Symbol	PKD2L2
Entrez Gene	27039(Human)
SwissProt	Q9NZM6(Human)

*AREX continuously optimizes our products. Webpage content may not reflect the latest updates. For inquiries, please contact info@arexbio.com or your local distributor.

*Clone Number, Reactivity, Source/Host and Clonality can be found in the product name and Key Features section above.

DATASHEET**PKD2L2 Rabbit Polyclonal Antibody**

CAT. NO. APA18461

DATA

Western blot analysis of PKD2L2 expression in NCIH460 (A) whole cell lysates. (Predicted band size: 73 kD; Observed band size: 70 kD)

STORAGE

Store at 4°C short term. For long term storage, store at -20°C, avoiding freeze/thaw cycles.

NOTE

For Research Use Only. Not for diagnostic, therapeutics, prophylactic or in vivo use.