

## DATASHEET

# TCHHL1 Rabbit Polyclonal Antibody

CAT. NO. APA18462

### KEY FEATURES

Target	TCHHL1	Source / Host	Rabbit
Reactivity	Human	Clonality	Polyclonal
Applications	WB	Conjugation	Unconjugated
Form / Buffer	Liquid in 0.42% Potassium phosphate, 0.87% Sodium chloride, pH 7.3, 30% glycerol, and 0.01% sodium azide.		Storage at -20°C

### BACKGROUND

This gene belongs to the S100 fused-type protein (SFTP) gene family, and is located in a cluster of SFTP genes on chromosome 1q21. Several members of this family have been implicated in the development of complex skin disorders. This gene is evolutionarily conserved; its expression appears to be hair-specific and spatially restricted within the distal inner root sheath of the hair follicle. It thus may have an important role in hair morphogenesis.

### APPLICATION

To ensure optimal assay performance, AREX recommends conducting reagent titration tailored to each testing system for optimal detection results.

WB	1:500 - 1:1000
----	----------------

\*Results are sample-specific. Please refer to your local assay conditions and test parameters for reference.

### PRODUCT OVERVIEW

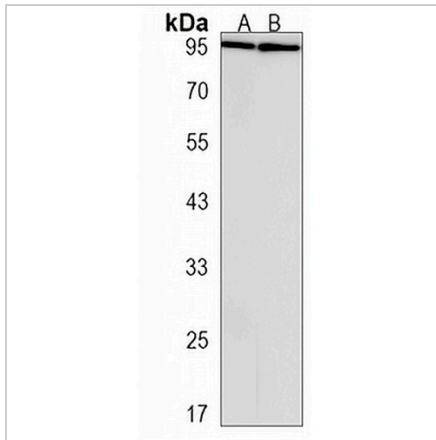
Description	Rabbit polyclonal antibody to TCHHL1
Specificity	Recognizes endogenous levels of TCHHL1 protein.
Antibody Type	Primary antibody
Immunogen	KLH-conjugated synthetic peptide encompassing a sequence within the N-terminal region of human TCHHL1. The exact sequence is proprietary.
Purification	The antibody was purified by immunogen affinity chromatography.
Molecular Weight	Predicted: 99 kD; Observed: 99 kD
Form/Buffer	Liquid in 0.42% Potassium phosphate, 0.87% Sodium chloride, pH 7.3, 30% glycerol, and 0.01% sodium azide.
Alternative Names	S100A17; THHL1; Trichohyalin-like protein 1; Basalin; Protein S100-A17; S100 calcium-binding protein A17
Gene Symbol	TCHHL1
Entrez Gene	126637(Human)
SwissProt	Q5QJ38(Human)

\*AREX continuously optimizes our products. Webpage content may not reflect the latest updates. For inquiries, please contact [info@arexbio.com](mailto:info@arexbio.com) or your local distributor.

\*Clone Number, Reactivity, Source/Host and Clonality can be found in the product name and Key Features section above.

**DATASHEET****TCHHL1 Rabbit Polyclonal Antibody**

CAT. NO. APA18462

**DATA**

Western blot analysis of TCHHL1 expression in MDAMB231 (A), SKBR3 (B) whole cell lysates. (Predicted band size: 99 kD; Observed band size: 99 kD)

**STORAGE**

Store at 4°C short term. For long term storage, store at -20°C, avoiding freeze/thaw cycles.

**NOTE**

For Research Use Only. Not for diagnostic, therapeutics, prophylactic or in vivo use.