

DATASHEET

TFDP3 Rabbit Polyclonal Antibody

CAT. NO. APA18468

KEY FEATURES

Target	TFDP3	Source / Host	Rabbit
Reactivity	Human	Clonality	Polyclonal
Applications	WB	Conjugation	Unconjugated
Form / Buffer	Liquid in 0.42% Potassium phosphate, 0.87% Sodium chloride, pH 7.3, 30% glycerol, and 0.01% sodium azide.		Storage at -20°C

BACKGROUND

Competitive inhibitor of E2F-mediated transactivation activity. Impairs E2F-mediated cell-cycle progression from G(1) to S phase.

APPLICATION

To ensure optimal assay performance, AREX recommends conducting reagent titration tailored to each testing system for optimal detection results.

WB	1:500 - 1:1000
----	----------------

*Results are sample-specific. Please refer to your local assay conditions and test parameters for reference.

PRODUCT OVERVIEW

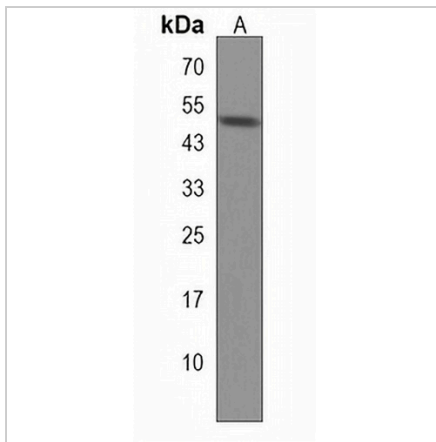
Description	Rabbit polyclonal antibody to TFDP3
Specificity	Recognizes endogenous levels of TFDP3 protein.
Antibody Type	Primary antibody
Immunogen	KLH-conjugated synthetic peptide encompassing a sequence within the N-terminal region of human TFDP3. The exact sequence is proprietary.
Purification	The antibody was purified by immunogen affinity chromatography.
Molecular Weight	Predicted: 44 kD; Observed: 50 kD
Form/Buffer	Liquid in 0.42% Potassium phosphate, 0.87% Sodium chloride, pH 7.3, 30% glycerol, and 0.01% sodium azide.
Alternative Names	DP4; HCA661; Transcription factor Dp family member 3; Cancer/testis antigen 30; CT30; Hepatocellular carcinoma-associated antigen 661
Gene Symbol	TFDP3
Entrez Gene	51270(Human)
SwissProt	Q5H9I0(Human)

*AREX continuously optimizes our products. Webpage content may not reflect the latest updates. For inquiries, please contact info@arexbio.com or your local distributor.

*Clone Number, Reactivity, Source/Host and Clonality can be found in the product name and Key Features section above.

DATASHEET**TFDP3 Rabbit Polyclonal Antibody**

CAT. NO. APA18468

DATA

Western blot analysis of TFDP3 expression in WiDr (A) whole cell lysates. (Predicted band size: 44 kD; Observed band size: 50 kD)

STORAGE

Store at 4°C short term. For long term storage, store at -20°C, avoiding freeze/thaw cycles.

NOTE

For Research Use Only. Not for diagnostic, therapeutics, prophylactic or in vivo use.