

DATASHEET

ARMCX4 Rabbit Polyclonal Antibody

CAT. NO. APA18472

KEY FEATURES

Target	ARMCX4	Source / Host	Rabbit
Reactivity	Human	Clonality	Polyclonal
Applications	WB	Conjugation	Unconjugated
Form / Buffer	Liquid in 0.42% Potassium phosphate, 0.87% Sodium chloride, pH 7.3, 30% glycerol, and 0.01% sodium azide.		Storage at-20°C

BACKGROUND

The product of this gene belongs to the armadillo repeat-containing family of proteins, which interact with other proteins in a variety of cellular processes. The function of this family member is currently unknown. Alternative splicing of this gene results in multiple transcript variants.

APPLICATION

To ensure optimal assay performance, AREX recommends conducting reagent titration tailored to each testing system for optimal detection results.

WB	1:500 - 1:1000
----	----------------

*Results are sample-specific. Please refer to your local assay conditions and test parameters for reference.

PRODUCT OVERVIEW

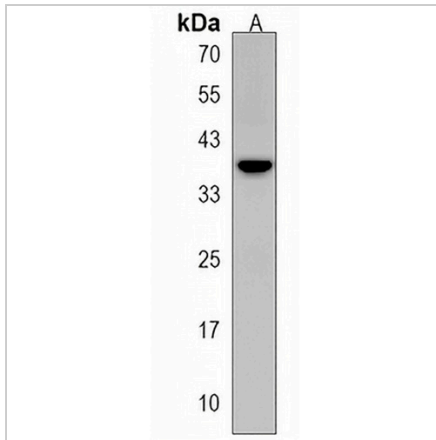
Description	Rabbit polyclonal antibody to ARMCX4
Specificity	Recognizes endogenous levels of ARMCX4 protein.
Antibody Type	Primary antibody
Immunogen	KLH-conjugated synthetic peptide encompassing a sequence within the Central region of human ARMCX4. The exact sequence is proprietary.
Purification	The antibody was purified by immunogen affinity chromatography.
Molecular Weight	Predicted: 235; Observed: 38 kD
Form/Buffer	Liquid in 0.42% Potassium phosphate, 0.87% Sodium chloride, pH 7.3, 30% glycerol, and 0.01% sodium azide.
Alternative Names	Armadillo repeat-containing X-linked protein 4
Gene Symbol	ARMCX4
Entrez Gene	100131755(Human)
SwissProt	Q5H9R4(Human)

*AREX continuously optimizes our products. Webpage content may not reflect the latest updates. For inquiries, please contact info@arexbio.com or your local distributor.

*Clone Number, Reactivity, Source/Host and Clonality can be found in the product name and Key Features section above.

DATASHEET**ARMCX4 Rabbit Polyclonal Antibody**

CAT. NO. APA18472

DATA

Western blot analysis of ARMCX4 expression in HL60 (A) whole cell lysates. (Predicted band size: 235; 38 kD; Observed band size: 38 kD)

STORAGE

Store at 4°C short term. For long term storage, store at -20°C, avoiding freeze/thaw cycles.

NOTE

For Research Use Only. Not for diagnostic, therapeutics, prophylactic or in vivo use.