

DATASHEET

KLRF2 Rabbit Polyclonal Antibody

CAT. NO. APA18475

KEY FEATURES

Target	KLRF2	Source / Host	Rabbit
Reactivity	Human	Clonality	Polyclonal
Applications	WB	Conjugation	Unconjugated
Form / Buffer	Liquid in 0.42% Potassium phosphate, 0.87% Sodium chloride, pH 7.3, 30% glycerol, and 0.01% sodium azide.		Storage at -20°C

BACKGROUND

C-type lectin-like receptor involved in natural killer cell mediated cytotoxicity and cytokine secretion in keratinocytes via its interaction with CLEC2A . Triggers degranulation in a SYK-dependent manner and stimulates SYK phosphotyrosinylation without recruiting SYK directly .

APPLICATION

To ensure optimal assay performance, AREX recommends conducting reagent titration tailored to each testing system for optimal detection results.

WB	1:500 - 1:1000
----	----------------

*Results are sample-specific. Please refer to your local assay conditions and test parameters for reference.

PRODUCT OVERVIEW

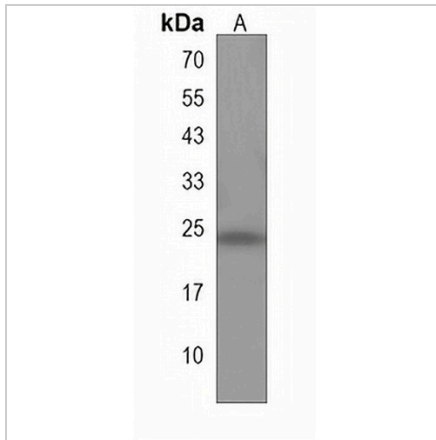
Description	Rabbit polyclonal antibody to KLRF2
Specificity	Recognizes endogenous levels of KLRF2 protein.
Antibody Type	Primary antibody
Immunogen	KLH-conjugated synthetic peptide encompassing a sequence within the N-terminal region of human KLRF2. The exact sequence is proprietary.
Purification	The antibody was purified by immunogen affinity chromatography.
Molecular Weight	Predicted: 24 kD; Observed: 24 kD
Form/Buffer	Liquid in 0.42% Potassium phosphate, 0.87% Sodium chloride, pH 7.3, 30% glycerol, and 0.01% sodium azide.
Alternative Names	Killer cell lectin-like receptor subfamily F member 2; Lectin-like receptor F2; Activating coreceptor NKp65
Gene Symbol	KLRF2
Entrez Gene	100431172(Human)
SwissProt	D3W0D1(Human)

*AREX continuously optimizes our products. Webpage content may not reflect the latest updates. For inquiries, please contact info@arexbio.com or your local distributor.

*Clone Number, Reactivity, Source/Host and Clonality can be found in the product name and Key Features section above.

DATASHEET**KLRF2 Rabbit Polyclonal Antibody**

CAT. NO. APA18475

DATA

Western blot analysis of KLRF2 expression in ZR751 (A) whole cell lysates. (Predicted band size: 24 kD; Observed band size: 24 kD)

STORAGE

Store at 4°C short term. For long term storage, store at -20°C, avoiding freeze/thaw cycles.

NOTE

For Research Use Only. Not for diagnostic, therapeutics, prophylactic or in vivo use.