

DATASHEET

PMS2P5 Rabbit Polyclonal Antibody

CAT. NO. APA18482

KEY FEATURES

| | | | |
|---------------|---|---------------|---------------------|
| Target | PMS2P5 | Source / Host | Rabbit |
| Reactivity | Human | Clonality | Polyclonal |
| Applications | WB | Conjugation | Unconjugated |
| Form / Buffer | Liquid in 0.42% Potassium phosphate, 0.87% Sodium chloride, pH 7.3, 30% glycerol, and 0.01% sodium azide. | | Storage at -20°C |

BACKGROUND

Postmeiotic segregation increased 2-like protein 5 (PMS2P5), also known as Postmeiotic segregation increased protein 4, Postmeiotic segregation increased protein 7, Putative postmeiotic segregation increased 2 pseudogene 5. Belongs to the DNA mismatch repair MutL/HexB family

APPLICATION

To ensure optimal assay performance, AREX recommends conducting reagent titration tailored to each testing system for optimal detection results.

| | |
|----|----------------|
| WB | 1:500 - 1:1000 |
|----|----------------|

*Results are sample-specific. Please refer to your local assay conditions and test parameters for reference.

PRODUCT OVERVIEW

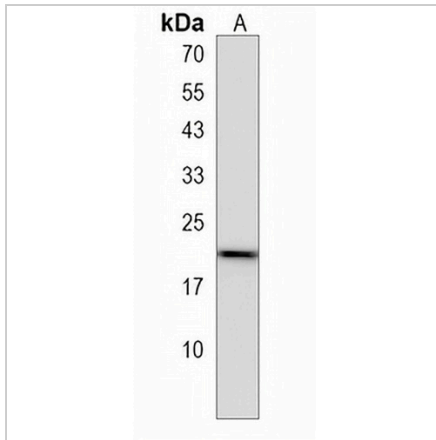
| | |
|-------------------|---|
| Description | Rabbit polyclonal antibody to PMS2P5 |
| Specificity | Recognizes endogenous levels of PMS2P5 protein. |
| Antibody Type | Primary antibody |
| Immunogen | KLH-conjugated synthetic peptide encompassing a sequence within the C-terminal region of human PMS2P5. The exact sequence is proprietary. |
| Purification | The antibody was purified by immunogen affinity chromatography. |
| Molecular Weight | Predicted: 15 kD; Observed: 22 kD |
| Form/Buffer | Liquid in 0.42% Potassium phosphate, 0.87% Sodium chloride, pH 7.3, 30% glycerol, and 0.01% sodium azide. |
| Alternative Names | PMS2L5; PMS4; PMS7; Postmeiotic segregation increased 2-like protein 5; Postmeiotic segregation increased protein 4; Postmeiotic segregation increased protein 7; Putative postmeiotic segregation increased 2 pseudogene 5 |
| Gene Symbol | PMS2P5 |
| Entrez Gene | 5383(Human) |
| SwissProt | A8MQ11(Human) |

*AREX continuously optimizes our products. Webpage content may not reflect the latest updates. For inquiries, please contact info@arexbio.com or your local distributor.

*Clone Number, Reactivity, Source/Host and Clonality can be found in the product name and Key Features section above.

DATASHEET**PMS2P5 Rabbit Polyclonal Antibody**

CAT. NO. APA18482

DATA

Western blot analysis of PMS2P5 expression in HepG2 (A) whole cell lysates. (Predicted band size: 15 kD; Observed band size: 22 kD)

STORAGE

Store at 4°C short term. For long term storage, store at -20°C, avoiding freeze/thaw cycles.

NOTE

For Research Use Only. Not for diagnostic, therapeutics, prophylactic or in vivo use.