

**DATASHEET**

**PPIAL4A Rabbit Polyclonal Antibody**

CAT. NO. APA18483

**KEY FEATURES**

Target	PPIAL4A	Source / Host	Rabbit
Reactivity	Human	Clonality	Polyclonal
Applications	WB	Conjugation	Unconjugated
Form / Buffer	Liquid in 0.42% Potassium phosphate, 0.87% Sodium chloride, pH 7.3, 30% glycerol, and 0.01% sodium azide.		Storage at -20°C

**BACKGROUND**

PPIases accelerate the folding of proteins. It catalyzes the cis-trans isomerization of proline imidic peptide bonds in oligopeptides .

**APPLICATION**

To ensure optimal assay performance, AREX recommends conducting reagent titration tailored to each testing system for optimal detection results.

WB	1:500 - 1:1000
----	----------------

\*Results are sample-specific. Please refer to your local assay conditions and test parameters for reference.

**PRODUCT OVERVIEW**

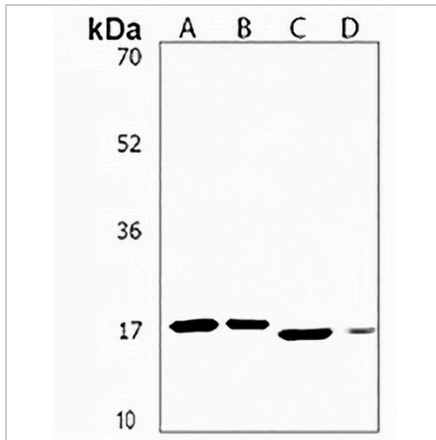
Description	Rabbit polyclonal antibody to PPIAL4A
Specificity	Recognizes endogenous levels of PPIAL4A protein.
Antibody Type	Primary antibody
Immunogen	KLH-conjugated synthetic peptide encompassing a sequence within the Central region of human PPIAL4A. The exact sequence is proprietary.
Purification	The antibody was purified by immunogen affinity chromatography.
Molecular Weight	Predicted: 18 kD; Observed: 18 kD
Form/Buffer	Liquid in 0.42% Potassium phosphate, 0.87% Sodium chloride, pH 7.3, 30% glycerol, and 0.01% sodium azide.
Alternative Names	COAS2; Peptidyl-prolyl cis-trans isomerase A-like 4A/B/C; PPIase A-like 4A; Chromosome 1-amplified sequence 2; COAS-2; Cyclophilin homolog overexpressed in liver cancer
Gene Symbol	PPIAL4A; PPIAL4B; PPIAL4C
Entrez Gene	164022; 653505; 653598(Human)
SwissProt	Q9Y536(Human)

\*AREX continuously optimizes our products. Webpage content may not reflect the latest updates. For inquiries, please contact [info@arexbio.com](mailto:info@arexbio.com) or your local distributor.

\*Clone Number, Reactivity, Source/Host and Clonality can be found in the product name and Key Features section above.

**DATASHEET****PPIAL4A Rabbit Polyclonal Antibody**

CAT. NO. APA18483

**DATA**

Western blot analysis of PPIAL4A expression in human brain (A), human kidney (B), human lung (C), human ovary (D) whole cell lysates. (Predicted band size: 18 kD; Observed band size: 18 kD)

**STORAGE**

Store at 4°C short term. For long term storage, store at -20°C, avoiding freeze/thaw cycles.

**NOTE**

For Research Use Only. Not for diagnostic, therapeutics, prophylactic or in vivo use.