

DATASHEET

PABPC1L2B Rabbit Polyclonal Antibody

CAT. NO. APA18497

KEY FEATURES

Target	PABPC1L2B	Source / Host	Rabbit
Reactivity	Human	Clonality	Polyclonal
Applications	WB	Conjugation	Unconjugated
Form / Buffer	Liquid in 0.42% Potassium phosphate, 0.87% Sodium chloride, pH 7.3, 30% glycerol, and 0.01% sodium azide.		Storage at -20°C

BACKGROUND

Polyadenylate-binding protein 1-like 2 (PABPC1L2A), also known as RNA-binding motif protein 32, RNA-binding protein 32.

APPLICATION

To ensure optimal assay performance, AREX recommends conducting reagent titration tailored to each testing system for optimal detection results.

WB	1:500 - 1:1000
----	----------------

*Results are sample-specific. Please refer to your local assay conditions and test parameters for reference.

PRODUCT OVERVIEW

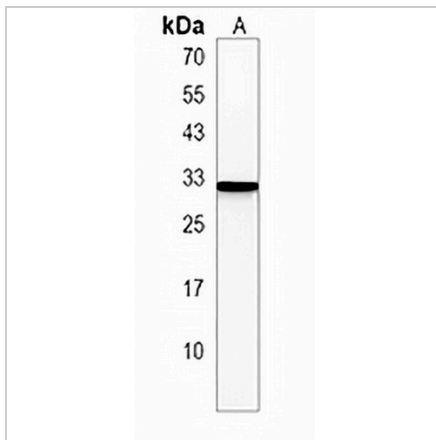
Description	Rabbit polyclonal antibody to PABPC1L2B
Specificity	Recognizes endogenous levels of PABPC1L2B protein.
Antibody Type	Primary antibody
Immunogen	KLH-conjugated synthetic peptide encompassing a sequence within the C-terminal region of human PABPC1L2B. The exact sequence is proprietary.
Purification	The antibody was purified by immunogen affinity chromatography.
Molecular Weight	Predicted: 22 kD; Observed: 28 kD
Form/Buffer	Liquid in 0.42% Potassium phosphate, 0.87% Sodium chloride, pH 7.3, 30% glycerol, and 0.01% sodium azide.
Alternative Names	PABPC1L2; RBM32B; Polyadenylate-binding protein 1-like 2; RNA-binding motif protein 32; RNA-binding protein 32
Gene Symbol	PABPC1L2B
Entrez Gene	340529; 645974(Human)
SwissProt	Q5JQF8(Human)

*AREX continuously optimizes our products. Webpage content may not reflect the latest updates. For inquiries, please contact info@arexbio.com or your local distributor.

*Clone Number, Reactivity, Source/Host and Clonality can be found in the product name and Key Features section above.

DATASHEET**PABPC1L2B Rabbit Polyclonal Antibody**

CAT. NO. APA18497

DATA

Western blot analysis of PABPC1L2B expression in K562 (A) whole cell lysates. (Predicted band size: 22 kD; Observed band size: 28 kD)

STORAGE

Store at 4°C short term. For long term storage, store at -20°C, avoiding freeze/thaw cycles.

NOTE

For Research Use Only. Not for diagnostic, therapeutics, prophylactic or in vivo use.