

**DATASHEET**

**SLCO1B3 Rabbit Polyclonal Antibody**

CAT. NO. APA18498

**KEY FEATURES**

Target	SLCO1B3	Source / Host	Rabbit
Reactivity	Human	Clonality	Polyclonal
Applications	WB	Conjugation	Unconjugated
Form / Buffer	Liquid in 0.42% Potassium phosphate, 0.87% Sodium chloride, pH 7.3, 30% glycerol, and 0.01% sodium azide.		Storage at -20°C

**BACKGROUND**

Mediates the Na(+)-independent uptake of organic anions -independent uptake of organic anions . Shows broad substrate specificity, can transport both organic anions such as bile acid taurocholate (cholytaurine) and conjugated steroids (17-beta-glucuronosyl estradiol, dehydroepiandrosterone sulfate (DHEAS), and estrone 3-sulfate), as well as eicosanoid leukotriene C4, prostaglandin E2 and L-thyroxine (T4) . Hydrogencarbonate/HCO3(-) acts as the probable counteranion that exchanges for organic anions . Shows a pH-sensitive substrate specificity towards sulfated steroids, taurocholate and T4 which may be ascribed to the protonation state of the binding site and leads to a stimulation of substrate transport in an acidic microenvironment .

**APPLICATION**

To ensure optimal assay performance, AREX recommends conducting reagent titration tailored to each testing system for optimal detection results.

WB	1:500 - 1:1000
----	----------------

\*Results are sample-specific. Please refer to your local assay conditions and test parameters for reference.

**PRODUCT OVERVIEW**

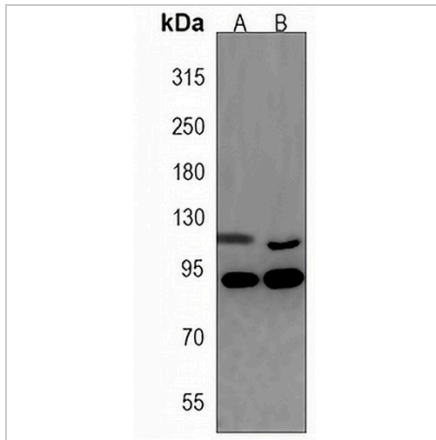
Description	Rabbit polyclonal antibody to SLCO1B3
Specificity	Recognizes endogenous levels of SLCO1B3 protein.
Antibody Type	Primary antibody
Immunogen	KLH-conjugated synthetic peptide encompassing a sequence within the C-terminal region of human SLCO1B3. The exact sequence is proprietary.
Purification	The antibody was purified by immunogen affinity chromatography.
Molecular Weight	Predicted: 77 kD; Observed: 92; 125 kD
Form/Buffer	Liquid in 0.42% Potassium phosphate, 0.87% Sodium chloride, pH 7.3, 30% glycerol, and 0.01% sodium azide.
Alternative Names	LST2; OATP1B3; OATP8,SLC21A8; Solute carrier organic anion transporter family member 1B3; Liver-specific organic anion transporter 2; LST-2; Organic anion transporter 8; Organic anion-transporting polypeptide 8; OATP-8; Solute carrier family 21 member 8
Gene Symbol	SLCO1B3
Entrez Gene	28234(Human)
SwissProt	Q9NPD5(Human)

\*AREX continuously optimizes our products. Webpage content may not reflect the latest updates. For inquiries, please contact [info@arexbio.com](mailto:info@arexbio.com) or your local distributor.

\*Clone Number, Reactivity, Source/Host and Clonality can be found in the product name and Key Features section above.

**DATASHEET****SLCO1B3 Rabbit Polyclonal Antibody**

CAT. NO. APA18498

**DATA****STORAGE**

Store at 4°C short term. For long term storage, store at -20°C, avoiding freeze/thaw cycles.

**NOTE**

For Research Use Only. Not for diagnostic, therapeutics, prophylactic or in vivo use.