

DATASHEET

KCTD17 Rabbit Polyclonal Antibody

CAT. NO. APA18500

KEY FEATURES

Target	KCTD17	Source / Host	Rabbit
Reactivity	Human	Clonality	Polyclonal
Applications	WB	Conjugation	Unconjugated
Form / Buffer	Liquid in 0.42% Potassium phosphate, 0.87% Sodium chloride, pH 7.3, 30% glycerol, and 0.01% sodium azide.		Storage at -20°C

BACKGROUND

Substrate-adapter for CUL3-RING ubiquitin ligase complexes which mediates the ubiquitination and subsequent proteasomal degradation of TCHP, a protein involved in ciliogenesis down-regulation. Thereby, positively regulates ciliogenesis, playing a crucial role in the initial steps of axoneme extension . May also play a role in endoplasmic reticulum calcium ion homeostasis .

APPLICATION

To ensure optimal assay performance, AREX recommends conducting reagent titration tailored to each testing system for optimal detection results.

WB	1:500 - 1:1000
----	----------------

*Results are sample-specific. Please refer to your local assay conditions and test parameters for reference.

PRODUCT OVERVIEW

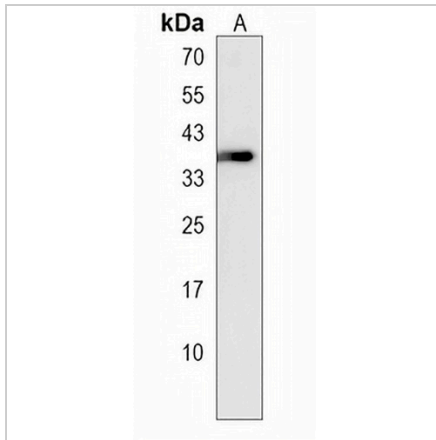
Description	Rabbit polyclonal antibody to KCTD17
Specificity	Recognizes endogenous levels of KCTD17 protein.
Antibody Type	Primary antibody
Immunogen	KLH-conjugated synthetic peptide encompassing a sequence within the Central region of human KCTD17. The exact sequence is proprietary.
Purification	The antibody was purified by immunogen affinity chromatography.
Molecular Weight	Predicted: 35 kD; Observed: 35 kD
Form/Buffer	Liquid in 0.42% Potassium phosphate, 0.87% Sodium chloride, pH 7.3, 30% glycerol, and 0.01% sodium azide.
Alternative Names	BTB/POZ domain-containing protein KCTD17
Gene Symbol	KCTD17
Entrez Gene	79734(Human)
SwissProt	Q8N5Z5(Human)

*AREX continuously optimizes our products. Webpage content may not reflect the latest updates. For inquiries, please contact info@arexbio.com or your local distributor.

*Clone Number, Reactivity, Source/Host and Clonality can be found in the product name and Key Features section above.

DATASHEET**KCTD17 Rabbit Polyclonal Antibody**

CAT. NO. APA18500

DATA

Western blot analysis of KCTD17 expression in NCIH292 (A) whole cell lysates. (Predicted band size: 35 kD; Observed band size: 35 kD)

STORAGE

Store at 4°C short term. For long term storage, store at -20°C, avoiding freeze/thaw cycles.

NOTE

For Research Use Only. Not for diagnostic, therapeutics, prophylactic or in vivo use.