

DATASHEET

CDC42EP1 Rabbit Polyclonal Antibody

CAT. NO. APA18502

KEY FEATURES

Target	CDC42EP1	Source / Host	Rabbit
Reactivity	Human	Clonality	Polyclonal
Applications	WB	Conjugation	Unconjugated
Form / Buffer	Liquid in 0.42% Potassium phosphate, 0.87% Sodium chloride, pH 7.3, 30% glycerol, and 0.01% sodium azide.		Storage at -20°C

BACKGROUND

Probably involved in the organization of the actin cytoskeleton. Induced membrane extensions in fibroblasts.

APPLICATION

To ensure optimal assay performance, AREX recommends conducting reagent titration tailored to each testing system for optimal detection results.

WB	1:500 - 1:1000
----	----------------

*Results are sample-specific. Please refer to your local assay conditions and test parameters for reference.

PRODUCT OVERVIEW

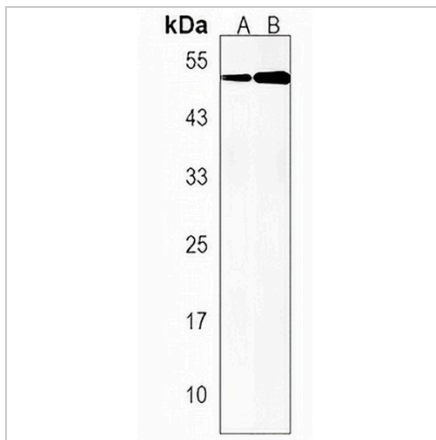
Description	Rabbit polyclonal antibody to CDC42EP1
Specificity	Recognizes endogenous levels of CDC42EP1 protein.
Antibody Type	Primary antibody
Immunogen	KLH-conjugated synthetic peptide encompassing a sequence within the C-terminal region of human CDC42EP1. The exact sequence is proprietary.
Purification	The antibody was purified by immunogen affinity chromatography.
Molecular Weight	Predicted: 40 kD; Observed: 50 kD
Form/Buffer	Liquid in 0.42% Potassium phosphate, 0.87% Sodium chloride, pH 7.3, 30% glycerol, and 0.01% sodium azide.
Alternative Names	BORG5; CEP1; MSE55; Cdc42 effector protein 1; Binder of Rho GTPases 5; Serum protein MSE55
Gene Symbol	CDC42EP1
Entrez Gene	11135(Human)
SwissProt	Q00587(Human)

*AREX continuously optimizes our products. Webpage content may not reflect the latest updates. For inquiries, please contact info@arexbio.com or your local distributor.

*Clone Number, Reactivity, Source/Host and Clonality can be found in the product name and Key Features section above.

DATASHEET**CDC42EP1 Rabbit Polyclonal Antibody**

CAT. NO. APA18502

DATA

Western blot analysis of CDC42EP1 expression in HUVEC (A), U251MG (B) whole cell lysates. (Predicted band size: 40 kD; Observed band size: 50 kD)

STORAGE

Store at 4°C short term. For long term storage, store at -20°C, avoiding freeze/thaw cycles.

NOTE

For Research Use Only. Not for diagnostic, therapeutics, prophylactic or in vivo use.