

DATASHEET

PAPPA-AS1 Rabbit Polyclonal Antibody

CAT. NO. APA18506

KEY FEATURES

Target	PAPPA-AS1	Source / Host	Rabbit
Reactivity	Human	Clonality	Polyclonal
Applications	WB	Conjugation	Unconjugated
Form / Buffer	Liquid in 0.42% Potassium phosphate, 0.87% Sodium chloride, pH 7.3, 30% glycerol, and 0.01% sodium azide.		Storage at -20°C

BACKGROUND

Protein PAPPAS (PAPPA-AS1), also known as DIPLA1 antisense RNA 1, DIPLA1 antisense gene protein 1, DIPLA1-antisense expressed. Subcellular location: Endoplasmic reticulum membrane Tissue specificity: Expressed in placenta with lower expression in brain, kidney and testis

APPLICATION

To ensure optimal assay performance, AREX recommends conducting reagent titration tailored to each testing system for optimal detection results.

WB	1:500 - 1:1000
----	----------------

*Results are sample-specific. Please refer to your local assay conditions and test parameters for reference.

PRODUCT OVERVIEW

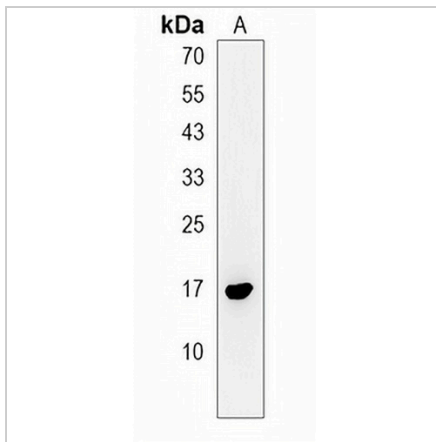
Description	Rabbit polyclonal antibody to PAPPA-AS1
Specificity	Recognizes endogenous levels of PAPPA-AS1 protein.
Antibody Type	Primary antibody
Immunogen	KLH-conjugated synthetic peptide encompassing a sequence within the N-terminal region of human PAPPA-AS1. The exact sequence is proprietary.
Purification	The antibody was purified by immunogen affinity chromatography.
Molecular Weight	Predicted: 12 kD; Observed: 17 kD
Form/Buffer	Liquid in 0.42% Potassium phosphate, 0.87% Sodium chloride, pH 7.3, 30% glycerol, and 0.01% sodium azide.
Alternative Names	DIPAS; PAPPAS; Protein PAPPAS; DIPLA1 antisense RNA 1; DIPLA1 antisense gene protein 1; DIPLA1-antisense expressed; PAPPAS antisense RNA 1; PAPPAS antisense gene protein 1; PAPPAS-antisense expressed
Gene Symbol	PAPPA-AS1
Entrez Gene	493913(Human)
SwissProt	Q5QFB9(Human)

*AREX continuously optimizes our products. Webpage content may not reflect the latest updates. For inquiries, please contact info@arexbio.com or your local distributor.

*Clone Number, Reactivity, Source/Host and Clonality can be found in the product name and Key Features section above.

DATASHEET**PAPPA-AS1 Rabbit Polyclonal Antibody**

CAT. NO. APA18506

DATA

Western blot analysis of PAPPA-AS1 expression in 293 (A) whole cell lysates. (Predicted band size: 12 kD; Observed band size: 17 kD)

STORAGE

Store at 4°C short term. For long term storage, store at -20°C, avoiding freeze/thaw cycles.

NOTE

For Research Use Only. Not for diagnostic, therapeutics, prophylactic or in vivo use.