

DATASHEET

PSG4 Rabbit Polyclonal Antibody

CAT. NO. APA18507

KEY FEATURES

Target	PSG4	Source / Host	Rabbit
Reactivity	Human	Clonality	Polyclonal
Applications	WB	Conjugation	Unconjugated
Form / Buffer	Liquid in 0.42% Potassium phosphate, 0.87% Sodium chloride, pH 7.3, 30% glycerol, and 0.01% sodium azide.		Storage at -20°C

BACKGROUND

The protein encoded by this gene is a pregnancy-specific glycoprotein (PSG), one of several encoded by a cluster of similar genes on chromosome 19. This gene is a member of the carcinoembryonic antigen (CEA) gene family and may play a role in regulation of the innate immune system. Several transcript variants encoding different isoforms have been found for this gene.

APPLICATION

To ensure optimal assay performance, AREX recommends conducting reagent titration tailored to each testing system for optimal detection results.

WB	1:500 - 1:1000
----	----------------

*Results are sample-specific. Please refer to your local assay conditions and test parameters for reference.

PRODUCT OVERVIEW

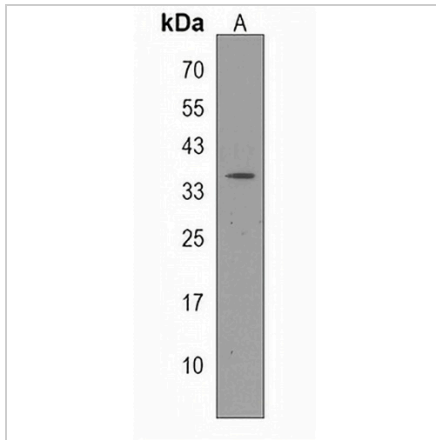
Description	Rabbit polyclonal antibody to PSG4
Specificity	Recognizes endogenous levels of PSG4 protein.
Antibody Type	Primary antibody
Immunogen	KLH-conjugated synthetic peptide encompassing a sequence within the N-terminal region of human PSG4. The exact sequence is proprietary.
Purification	The antibody was purified by immunogen affinity chromatography.
Molecular Weight	Predicted: 47 kD; Observed: 36 kD
Form/Buffer	Liquid in 0.42% Potassium phosphate, 0.87% Sodium chloride, pH 7.3, 30% glycerol, and 0.01% sodium azide.
Alternative Names	CGM4; PSG9; Pregnancy-specific beta-1-glycoprotein 4; PS-beta-G-4; PSBG-4; Pregnancy-specific glycoprotein 4; Pregnancy-specific beta-1-glycoprotein 9; PS-beta-G-9; PSBG-9; Pregnancy-specific glycoprotein 9
Gene Symbol	PSG4
Entrez Gene	5672(Human)
SwissProt	Q00888(Human)

*AREX continuously optimizes our products. Webpage content may not reflect the latest updates. For inquiries, please contact info@arexbio.com or your local distributor.

*Clone Number, Reactivity, Source/Host and Clonality can be found in the product name and Key Features section above.

DATASHEET**PSG4 Rabbit Polyclonal Antibody**

CAT. NO. APA18507

DATA

Western blot analysis of PSG4 expression in MDAMB453 (A) whole cell lysates. (Predicted band size: 47 kD; Observed band size: 36 kD)

STORAGE

Store at 4°C short term. For long term storage, store at -20°C, avoiding freeze/thaw cycles.

NOTE

For Research Use Only. Not for diagnostic, therapeutics, prophylactic or in vivo use.