

**DATASHEET**

**STAG3L1 Rabbit Polyclonal Antibody**

CAT. NO. APA18514

**KEY FEATURES**

Target	STAG3L1	Source / Host	Rabbit
Reactivity	Human	Clonality	Polyclonal
Applications	WB	Conjugation	Unconjugated
Form / Buffer	Liquid in 0.42% Potassium phosphate, 0.87% Sodium chloride, pH 7.3, 30% glycerol, and 0.01% sodium azide.		Storage at -20°C

**BACKGROUND**

Putative STAG3-like protein 1 (STAG3L1), also known as Stromal antigen 3-like protein 1. Belongs to the SCC3 family Subcellular location: Nucleus

**APPLICATION**

To ensure optimal assay performance, AREX recommends conducting reagent titration tailored to each testing system for optimal detection results.

WB	1:500 - 1:1000
----	----------------

\*Results are sample-specific. Please refer to your local assay conditions and test parameters for reference.

**PRODUCT OVERVIEW**

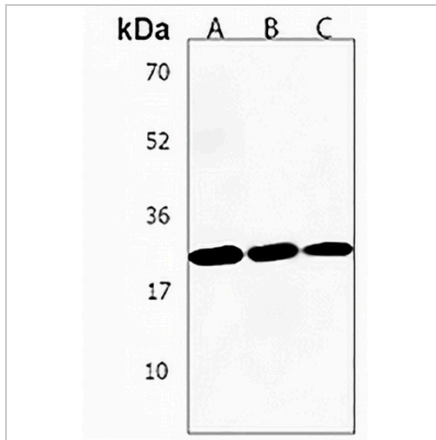
Description	Rabbit polyclonal antibody to STAG3L1
Specificity	Recognizes endogenous levels of STAG3L1 protein.
Antibody Type	Primary antibody, Tag
Immunogen	KLH-conjugated synthetic peptide encompassing a sequence within the Central region of human STAG3L1. The exact sequence is proprietary.
Purification	The antibody was purified by immunogen affinity chromatography.
Molecular Weight	Predicted: 23 kD; Observed: 24 kD
Form/Buffer	Liquid in 0.42% Potassium phosphate, 0.87% Sodium chloride, pH 7.3, 30% glycerol, and 0.01% sodium azide.
Alternative Names	Putative STAG3-like protein 1; Stromal antigen 3-like protein 1
Gene Symbol	STAG3L1
Entrez Gene	54441(Human)
SwissProt	POCL83(Human)

\*AREX continuously optimizes our products. Webpage content may not reflect the latest updates. For inquiries, please contact [info@arexbio.com](mailto:info@arexbio.com) or your local distributor.

\*Clone Number, Reactivity, Source/Host and Clonality can be found in the product name and Key Features section above.

**DATASHEET****STAG3L1 Rabbit Polyclonal Antibody**

CAT. NO. APA18514

**DATA**

Western blot analysis of STAG3L1 expression in human testis (A), MCF7 (B), MOLT4 (C) whole cell lysates. (Predicted band size: 23 kD; Observed band size: 24 kD)

**STORAGE**

Store at 4°C short term. For long term storage, store at -20°C, avoiding freeze/thaw cycles.

**NOTE**

For Research Use Only. Not for diagnostic, therapeutics, prophylactic or in vivo use.