

## DATASHEET

# GATSL2 Rabbit Polyclonal Antibody

CAT. NO. APA18517

### KEY FEATURES

Target	GATSL2	Source / Host	Rabbit
Reactivity	Human	Clonality	Polyclonal
Applications	WB, IHC	Conjugation	Unconjugated
Form / Buffer	Liquid in 0.42% Potassium phosphate, 0.87% Sodium chloride, pH 7.3, 30% glycerol, and 0.01% sodium azide.		Storage at-20°C

### BACKGROUND

Functions as a negative regulator of the TORC1 signaling pathway through the GATOR complex. As part of homodimers or heterodimers with CASTOR1, directly binds and inhibits the GATOR subcomplex GATOR2 and thereby mTORC1. Does not directly bind arginine, but binding of arginine to CASTOR1 disrupts the interaction of CASTOR2-containing heterodimers with GATOR2 which can in turn activate mTORC1 and the TORC1 signaling pathway.

### APPLICATION

To ensure optimal assay performance, AREX recommends conducting reagent titration tailored to each testing system for optimal detection results.

WB	1:500 - 1:1000
IHC	1:50 - 1:100

\*Results are sample-specific. Please refer to your local assay conditions and test parameters for reference.

### PRODUCT OVERVIEW

Description	Rabbit polyclonal antibody to GATSL2
Specificity	Recognizes endogenous levels of GATSL2 protein.
Antibody Type	Primary antibody
Immunogen	KLH-conjugated synthetic peptide encompassing a sequence within the N-terminal region of human GATSL2. The exact sequence is proprietary.
Purification	The antibody was purified by immunogen affinity chromatography.
Molecular Weight	Predicted: 36 kD; Observed: 36 kD
Form/Buffer	Liquid in 0.42% Potassium phosphate, 0.87% Sodium chloride, pH 7.3, 30% glycerol, and 0.01% sodium azide.
Alternative Names	GATS-like protein 2
Gene Symbol	GATSL2
Entrez Gene	389523; 729438(Human)
SwissProt	A6NHX0(Human)

\*AREX continuously optimizes our products. Webpage content may not reflect the latest updates. For inquiries, please contact [info@arex.bio](mailto:info@arex.bio) or your local distributor.

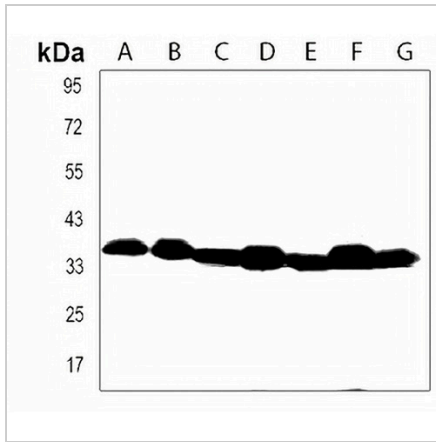
\*Clone Number, Reactivity, Source/Host and Clonality can be found in the product name and Key Features section above.

**DATASHEET**

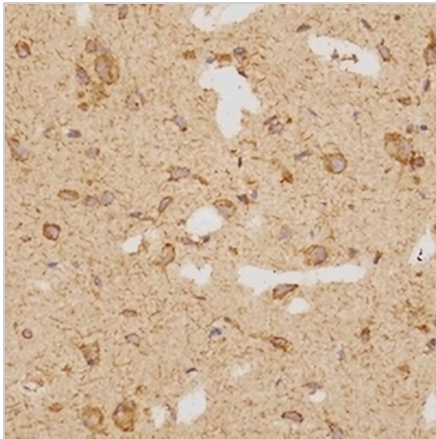
**GATSL2 Rabbit Polyclonal Antibody**

CAT. NO. APA18517

**DATA**



Western blot analysis of GATSL2 expression in A549 (A), Caco2 (B), HeLa (C), MDAMB231 (D), HepG2 (E), U2OS (F), SKBR3 (G) whole cell lysates. (Predicted band size: 36 kD; Observed band size: 36 kD)



Immunohistochemical analysis of GATSL2 staining in human brain formalin fixed paraffin embedded tissue section. The section was pre-treated using heat mediated antigen retrieval with sodium citrate buffer (pH 6.0). The section was then incubated with the antibody at room temperature and detected using an HRP conjugated compact polymer system. DAB was used as the chromogen. The section was then counterstained with haematoxylin and mounted with DPX.

**STORAGE**

Store at 4°C short term. For long term storage, store at -20°C, avoiding freeze/thaw cycles.

**NOTE**

For Research Use Only. Not for diagnostic, therapeutics, prophylactic or in vivo use.