

DATASHEET

CTRB1 Rabbit Polyclonal Antibody

CAT. NO. APA18519

KEY FEATURES

Target	CTRB1	Source / Host	Rabbit
Reactivity	Human	Clonality	Polyclonal
Applications	WB	Conjugation	Unconjugated
Form / Buffer	Liquid in 0.42% Potassium phosphate, 0.87% Sodium chloride, pH 7.3, 30% glycerol, and 0.01% sodium azide.		Storage at -20°C

BACKGROUND

This gene encodes a member of the serine protease family of enzymes and forms a principal precursor of the pancreatic proteolytic enzymes. The encoded preproprotein is synthesized in the acinar cells of the pancreas and secreted into the small intestine where it undergoes proteolytic activation to generate a functional enzyme. This CTRB1 gene is located head-to-head with the related CTRB2 gene. Some human populations have an alternate haplotype which inverts a 16.6 Kb region containing portions of intron 1, exon 1, and the upstream sequence of the CTRB1 and CTRB2 genes. In this inversion haplotype exon 1 and flanking sequence is swapped in CTRB1 and CTRB2. This inversion is associated with differential gene expression and increased risk for chronic pancreatitis.

APPLICATION

To ensure optimal assay performance, AREX recommends conducting reagent titration tailored to each testing system for optimal detection results.

WB	1:500 - 1:1000
----	----------------

*Results are sample-specific. Please refer to your local assay conditions and test parameters for reference.

PRODUCT OVERVIEW

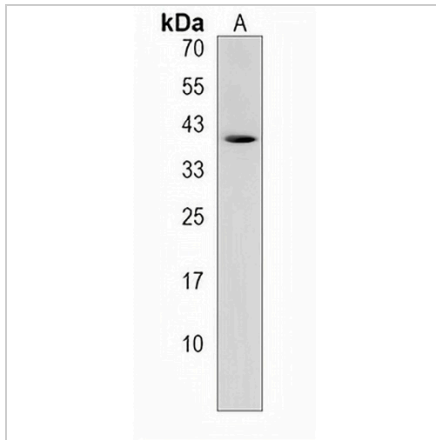
Description	Rabbit polyclonal antibody to CTRB1
Specificity	Recognizes endogenous levels of CTRB1 protein.
Antibody Type	Primary antibody
Immunogen	KLH-conjugated synthetic peptide encompassing a sequence within the Central region of human CTRB1. The exact sequence is proprietary.
Purification	The antibody was purified by immunogen affinity chromatography.
Molecular Weight	Predicted: 27 kD; Observed: 38 kD
Form/Buffer	Liquid in 0.42% Potassium phosphate, 0.87% Sodium chloride, pH 7.3, 30% glycerol, and 0.01% sodium azide.
Alternative Names	CTRB; Chymotrypsinogen B
Gene Symbol	CTRB1
Entrez Gene	1504(Human)
SwissProt	P17538(Human)

*AREX continuously optimizes our products. Webpage content may not reflect the latest updates. For inquiries, please contact info@arexbio.com or your local distributor.

*Clone Number, Reactivity, Source/Host and Clonality can be found in the product name and Key Features section above.

DATASHEET**CTRB1 Rabbit Polyclonal Antibody**

CAT. NO. APA18519

DATA

Western blot analysis of CTRB1 expression in MDAMB231 (A) whole cell lysates.
(Predicted band size: 27 kD; Observed band size: 38 kD)

STORAGE

Store at 4°C short term. For long term storage, store at -20°C, avoiding freeze/thaw cycles.

NOTE

For Research Use Only. Not for diagnostic, therapeutics, prophylactic or in vivo use.