

DATASHEET

CD200R1L Rabbit Polyclonal Antibody

CAT. NO. APA18522

KEY FEATURES

Target	CD200R1L	Source / Host	Rabbit
Reactivity	Human	Clonality	Polyclonal
Applications	WB	Conjugation	Unconjugated
Form / Buffer	Liquid in 0.42% Potassium phosphate, 0.87% Sodium chloride, pH 7.3, 30% glycerol, and 0.01% sodium azide.		Storage at -20°C

BACKGROUND

May be a receptor for the CD200/OX2 cell surface glycoprotein.

APPLICATION

To ensure optimal assay performance, AREX recommends conducting reagent titration tailored to each testing system for optimal detection results.

WB	1:500 - 1:1000
----	----------------

*Results are sample-specific. Please refer to your local assay conditions and test parameters for reference.

PRODUCT OVERVIEW

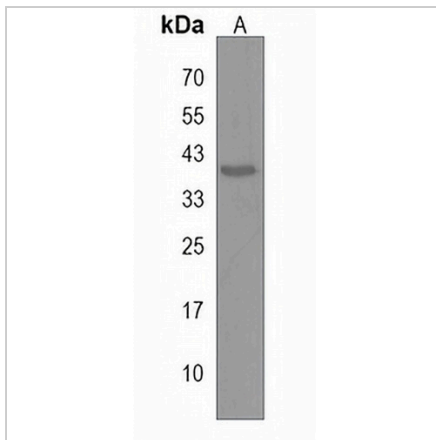
Description	Rabbit polyclonal antibody to CD200R1L
Specificity	Recognizes endogenous levels of CD200R1L protein.
Antibody Type	Primary antibody
Immunogen	KLH-conjugated synthetic peptide encompassing a sequence within the N-terminal region of human CD200R1L. The exact sequence is proprietary.
Purification	The antibody was purified by immunogen affinity chromatography.
Molecular Weight	Predicted: 29 kD; Observed: 40 kD
Form/Buffer	Liquid in 0.42% Potassium phosphate, 0.87% Sodium chloride, pH 7.3, 30% glycerol, and 0.01% sodium azide.
Alternative Names	CD200R2; Cell surface glycoprotein CD200 receptor 2; CD200 cell surface glycoprotein receptor-like 2; CD200 receptor-like 2; HuCD200R2; CD200 cell surface glycoprotein receptor-like a; CD200RLa; Cell surface glycoprotein CD200 receptor 1-like; Cell surface glycoprotein OX2 receptor 2
Gene Symbol	CD200R1L
Entrez Gene	344807(Human)
SwissProt	Q6Q8B3(Human)

*AREX continuously optimizes our products. Webpage content may not reflect the latest updates. For inquiries, please contact info@arexbio.com or your local distributor.

*Clone Number, Reactivity, Source/Host and Clonality can be found in the product name and Key Features section above.

DATASHEET**CD200R1L Rabbit Polyclonal Antibody**

CAT. NO. APA18522

DATA

Western blot analysis of CD200R1L expression in MDAMB453 (A) whole cell lysates.
(Predicted band size: 29 kD; Observed band size: 40 kD)

STORAGE

Store at 4°C short term. For long term storage, store at -20°C, avoiding freeze/thaw cycles.

NOTE

For Research Use Only. Not for diagnostic, therapeutics, prophylactic or in vivo use.