

DATASHEET

RRN3P2 Rabbit Polyclonal Antibody

CAT. NO. APA18523

KEY FEATURES

Target	RRN3P2	Source / Host	Rabbit
Reactivity	Human	Clonality	Polyclonal
Applications	WB	Conjugation	Unconjugated
Form / Buffer	Liquid in 0.42% Potassium phosphate, 0.87% Sodium chloride, pH 7.3, 30% glycerol, and 0.01% sodium azide.		Storage at -20°C

BACKGROUND

Putative RRN3-like protein RRN3P2 (RRN3P2), also known as RNA polymerase I transcription factor homolog pseudogene 2. Belongs to the RRN3 family

APPLICATION

To ensure optimal assay performance, AREX recommends conducting reagent titration tailored to each testing system for optimal detection results.

WB	1:500 - 1:1000
----	----------------

*Results are sample-specific. Please refer to your local assay conditions and test parameters for reference.

PRODUCT OVERVIEW

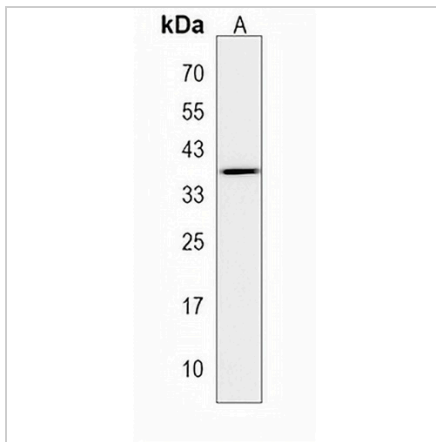
Description	Rabbit polyclonal antibody to RRN3P2
Specificity	Recognizes endogenous levels of RRN3P2 protein.
Antibody Type	Primary antibody
Immunogen	KLH-conjugated synthetic peptide encompassing a sequence within the C-terminal region of human RRN3P2. The exact sequence is proprietary.
Purification	The antibody was purified by immunogen affinity chromatography.
Molecular Weight	Predicted: 38 kD; Observed: 38 kD
Form/Buffer	Liquid in 0.42% Potassium phosphate, 0.87% Sodium chloride, pH 7.3, 30% glycerol, and 0.01% sodium azide.
Alternative Names	Putative RRN3-like protein RRN3P2; RNA polymerase I transcription factor homolog pseudogene 2
Gene Symbol	RRN3P2
Entrez Gene	653390(Human)
SwissProt	A6NIE6(Human)

*AREX continuously optimizes our products. Webpage content may not reflect the latest updates. For inquiries, please contact info@arexbio.com or your local distributor.

*Clone Number, Reactivity, Source/Host and Clonality can be found in the product name and Key Features section above.

DATASHEET**RRN3P2 Rabbit Polyclonal Antibody**

CAT. NO. APA18523

DATA

Western blot analysis of RRN3P2 expression in WiDr (A) whole cell lysates. (Predicted band size: 38 kD; Observed band size: 38 kD)

STORAGE

Store at 4°C short term. For long term storage, store at -20°C, avoiding freeze/thaw cycles.

NOTE

For Research Use Only. Not for diagnostic, therapeutics, prophylactic or in vivo use.