

DATASHEET

HIGD1C Rabbit Polyclonal Antibody

CAT. NO. APA18533

KEY FEATURES

Target	HIGD1C	Source / Host	Rabbit
Reactivity	Mouse	Clonality	Polyclonal
Applications	WB	Conjugation	Unconjugated
Form / Buffer	Liquid in 0.42% Potassium phosphate, 0.87% Sodium chloride, pH 7.3, 30% glycerol, and 0.01% sodium azide.		Storage at -20°C

BACKGROUND

Predicted to be involved in mitochondrial respirasome assembly. Predicted to act upstream of or within response to hypoxia. Predicted to be located in mitochondrial membrane. Predicted to be active in mitochondrion.

APPLICATION

To ensure optimal assay performance, AREX recommends conducting reagent titration tailored to each testing system for optimal detection results.

WB	1:500 - 1:1000
----	----------------

*Results are sample-specific. Please refer to your local assay conditions and test parameters for reference.

PRODUCT OVERVIEW

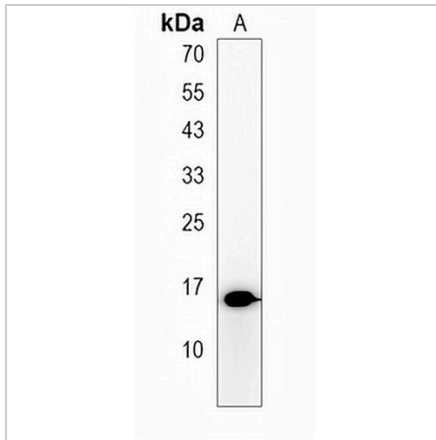
Description	Rabbit polyclonal antibody to HIGD1C
Specificity	Recognizes endogenous levels of HIGD1C protein.
Antibody Type	Primary antibody
Immunogen	KLH-conjugated synthetic peptide encompassing a sequence within the C-terminal region of human HIGD1C. The exact sequence is proprietary.
Purification	The antibody was purified by immunogen affinity chromatography.
Molecular Weight	Predicted: 11 kD; Observed: 16 kD
Form/Buffer	Liquid in 0.42% Potassium phosphate, 0.87% Sodium chloride, pH 7.3, 30% glycerol, and 0.01% sodium azide.
Alternative Names	UBIE; UBIE2; HIG1 domain family member 1C
Gene Symbol	HIGD1C
Entrez Gene	380975(Mouse)
SwissProt	Q76I25(Mouse)

*AREX continuously optimizes our products. Webpage content may not reflect the latest updates. For inquiries, please contact info@arexbio.com or your local distributor.

*Clone Number, Reactivity, Source/Host and Clonality can be found in the product name and Key Features section above.

DATASHEET**HIGD1C Rabbit Polyclonal Antibody**

CAT. NO. APA18533

DATA

Western blot analysis of HIGD1C expression in mouse heart (A) whole cell lysates.
(Predicted band size: 11 kD; Observed band size: 16 kD)

STORAGE

Store at 4°C short term. For long term storage, store at -20°C, avoiding freeze/thaw cycles.

NOTE

For Research Use Only. Not for diagnostic, therapeutics, prophylactic or in vivo use.