

DATASHEET

ST6GAL2 Rabbit Polyclonal Antibody

CAT. NO. APA18550

KEY FEATURES

Target	ST6GAL2	Source / Host	Rabbit
Reactivity	Human	Clonality	Polyclonal
Applications	WB	Conjugation	Unconjugated
Form / Buffer	Liquid in 0.42% Potassium phosphate, 0.87% Sodium chloride, pH 7.3, 30% glycerol, and 0.01% sodium azide.		Storage at-20°C

BACKGROUND

Transfers sialic acid from the donor of substrate CMP-sialic acid to galactose containing acceptor substrates. Has alpha-2,6-sialyltransferase activity toward oligosaccharides that have the Gal-beta-1,4-GlcNAc sequence at the non-reducing end of their carbohydrate groups, but it has weak or no activities toward glycoproteins and glycolipids.

APPLICATION

To ensure optimal assay performance, AREX recommends conducting reagent titration tailored to each testing system for optimal detection results.

WB	1:500 - 1:1000
----	----------------

*Results are sample-specific. Please refer to your local assay conditions and test parameters for reference.

PRODUCT OVERVIEW

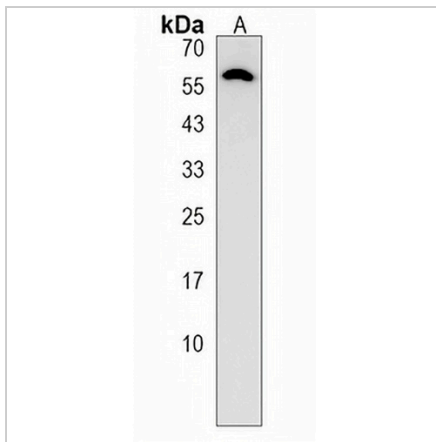
Description	Rabbit polyclonal antibody to ST6GAL2
Specificity	Recognizes endogenous levels of ST6GAL2 protein.
Antibody Type	Primary antibody
Immunogen	KLH-conjugated synthetic peptide encompassing a sequence within the C-terminal region of human ST6GAL2. The exact sequence is proprietary.
Purification	The antibody was purified by immunogen affinity chromatography.
Molecular Weight	Predicted: 60 kD; Observed: 55 kD
Form/Buffer	Liquid in 0.42% Potassium phosphate, 0.87% Sodium chloride, pH 7.3, 30% glycerol, and 0.01% sodium azide.
Alternative Names	KIAA1877; SIAT2; Beta-galactoside alpha-2,6-sialyltransferase 2; Alpha 2,6-ST 2; CMP-N-acetylneuraminate-beta-galactosamide-alpha-2,6-sialyltransferase 2; ST6Gal II; ST6GalIII; hST6Gal II; Sialyltransferase 2
Gene Symbol	ST6GAL2
Entrez Gene	84620(Human)
SwissProt	Q96JF0(Human)

*AREX continuously optimizes our products. Webpage content may not reflect the latest updates. For inquiries, please contact info@arexbio.com or your local distributor.

*Clone Number, Reactivity, Source/Host and Clonality can be found in the product name and Key Features section above.

DATASHEET**ST6GAL2 Rabbit Polyclonal Antibody**

CAT. NO. APA18550

DATA

Western blot analysis of ST6GAL2 expression in HepG2 (A) whole cell lysates. (Predicted band size: 60 kD; Observed band size: 55 kD)

STORAGE

Store at 4°C short term. For long term storage, store at -20°C, avoiding freeze/thaw cycles.

NOTE

For Research Use Only. Not for diagnostic, therapeutics, prophylactic or in vivo use.