

DATASHEET

TFEC Rabbit Polyclonal Antibody

CAT. NO. APA18551

KEY FEATURES

Target	TFEC	Source / Host	Rabbit
Reactivity	Human	Clonality	Polyclonal
Applications	WB	Conjugation	Unconjugated
Form / Buffer	Liquid in 0.42% Potassium phosphate, 0.87% Sodium chloride, pH 7.3, 30% glycerol, and 0.01% sodium azide.		Storage at -20°C

BACKGROUND

Transcriptional regulator that acts as a repressor or an activator. Acts as a transcriptional repressor on minimal promoter containing element F (that includes an E-box sequence). Binds to element F in an E-box sequence-specific manner. Acts as a transcriptional transactivator on the proximal promoter region of the tartrate-resistant acid phosphatase (TRAP) E-box containing promoter. Collaborates with MITF in target gene activation. Acts as a transcriptional repressor on minimal promoter containing mu E3 enhancer sequence. Binds to mu E3 DNA sequence of the immunoglobulin heavy-chain gene enhancer. Binds DNA in a homo- or heterodimeric form.

APPLICATION

To ensure optimal assay performance, AREX recommends conducting reagent titration tailored to each testing system for optimal detection results.

WB	1:500 - 1:1000
----	----------------

*Results are sample-specific. Please refer to your local assay conditions and test parameters for reference.

PRODUCT OVERVIEW

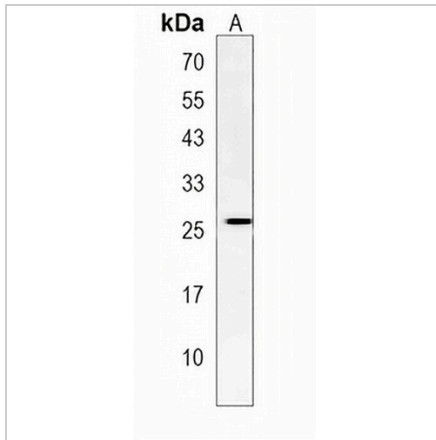
Description	Rabbit polyclonal antibody to TFEC
Specificity	Recognizes endogenous levels of TFEC protein.
Antibody Type	Primary antibody
Immunogen	KLH-conjugated synthetic peptide encompassing a sequence within the Central region of human TFEC. The exact sequence is proprietary.
Purification	The antibody was purified by immunogen affinity chromatography.
Molecular Weight	Predicted: 38 kD; Observed: 26 kD
Form/Buffer	Liquid in 0.42% Potassium phosphate, 0.87% Sodium chloride, pH 7.3, 30% glycerol, and 0.01% sodium azide.
Alternative Names	BHLHE34; TC FEC; TFECL; Transcription factor EC; TFE-C; Class E basic helix-loop-helix protein 34; bHLHe34; Transcription factor EC-like; hTFEC-L
Gene Symbol	TFEC
Entrez Gene	22797(Human)
SwissProt	O14948(Human)

*AREX continuously optimizes our products. Webpage content may not reflect the latest updates. For inquiries, please contact info@arexbio.com or your local distributor.

*Clone Number, Reactivity, Source/Host and Clonality can be found in the product name and Key Features section above.

DATASHEET**TFEC Rabbit Polyclonal Antibody**

CAT. NO. APA18551

DATA

Western blot analysis of TFEC expression in MDAMB231 (A) whole cell lysates. (Predicted band size: 38 kD; Observed band size: 26 kD)

STORAGE

Store at 4°C short term. For long term storage, store at -20°C, avoiding freeze/thaw cycles.

NOTE

For Research Use Only. Not for diagnostic, therapeutics, prophylactic or in vivo use.