

DATASHEET

RAET1E Rabbit Polyclonal Antibody

CAT. NO. APA18561

KEY FEATURES

Target	RAET1E	Source / Host	Rabbit
Reactivity	Human	Clonality	Polyclonal
Applications	WB	Conjugation	Unconjugated
Form / Buffer	Liquid in 0.42% Potassium phosphate, 0.87% Sodium chloride, pH 7.3, 30% glycerol, and 0.01% sodium azide.		Storage at -20°C

BACKGROUND

Binds and activates the KLRK1/NKG2D receptor, mediating natural killer cell cytotoxicity.

APPLICATION

To ensure optimal assay performance, AREX recommends conducting reagent titration tailored to each testing system for optimal detection results.

WB	1:500 - 1:1000
----	----------------

*Results are sample-specific. Please refer to your local assay conditions and test parameters for reference.

PRODUCT OVERVIEW

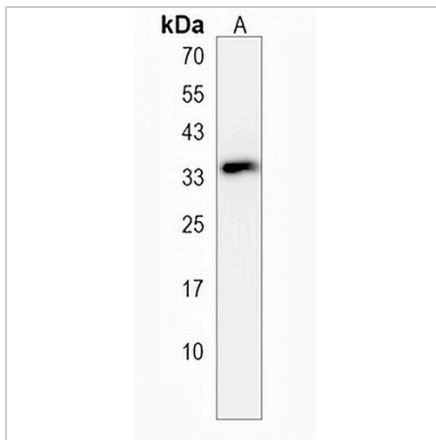
Description	Rabbit polyclonal antibody to RAET1E
Specificity	Recognizes endogenous levels of RAET1E protein.
Antibody Type	Primary antibody
Immunogen	KLH-conjugated synthetic peptide encompassing a sequence within the Central region of human RAET1E. The exact sequence is proprietary.
Purification	The antibody was purified by immunogen affinity chromatography.
Molecular Weight	Predicted: 30 kD; Observed: 34 kD
Form/Buffer	Liquid in 0.42% Potassium phosphate, 0.87% Sodium chloride, pH 7.3, 30% glycerol, and 0.01% sodium azide.
Alternative Names	LETAL; N2DL4; ULBP4; NKG2D ligand 4; N2DL-4; NKG2DL4; Lymphocyte effector toxicity activation ligand; RAE-1-like transcript 4; RL-4; Retinoic acid early transcript 1E
Gene Symbol	RAET1E
Entrez Gene	135250(Human)
SwissProt	Q8TD07(Human)

*AREX continuously optimizes our products. Webpage content may not reflect the latest updates. For inquiries, please contact info@arexbio.com or your local distributor.

*Clone Number, Reactivity, Source/Host and Clonality can be found in the product name and Key Features section above.

DATASHEET**RAET1E Rabbit Polyclonal Antibody**

CAT. NO. APA18561

DATA

Western blot analysis of RAET1E expression in A2058 (A) whole cell lysates. (Predicted band size: 30 kD; Observed band size: 34 kD)

STORAGE

Store at 4°C short term. For long term storage, store at -20°C, avoiding freeze/thaw cycles.

NOTE

For Research Use Only. Not for diagnostic, therapeutics, prophylactic or in vivo use.