

**DATASHEET**

**MAN2C1 Rabbit Polyclonal Antibody**

CAT. NO. APA18581

**KEY FEATURES**

Target	MAN2C1	Source / Host	Rabbit
Reactivity	Human	Clonality	Polyclonal
Applications	WB	Conjugation	Unconjugated
Form / Buffer	Liquid in 0.42% Potassium phosphate, 0.87% Sodium chloride, pH 7.3, 30% glycerol, and 0.01% sodium azide.		Storage at -20°C

**BACKGROUND**

Cleaves alpha 1,2-, alpha 1,3-, and alpha 1,6-linked mannose residues on cytoplasmic free oligosaccharides generated by N-glycoprotein degradation pathways.

**APPLICATION**

To ensure optimal assay performance, AREX recommends conducting reagent titration tailored to each testing system for optimal detection results.

WB	1:500 - 1:1000
----	----------------

\*Results are sample-specific. Please refer to your local assay conditions and test parameters for reference.

**PRODUCT OVERVIEW**

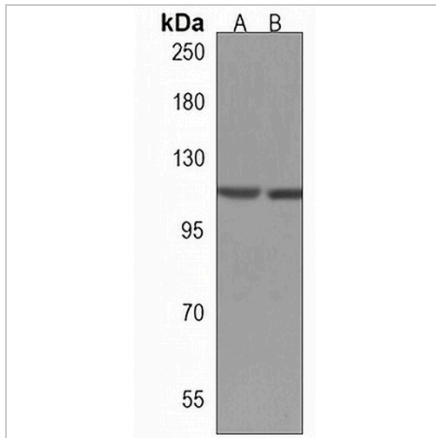
Description	Rabbit polyclonal antibody to MAN2C1
Specificity	Recognizes endogenous levels of MAN2C1 protein.
Antibody Type	Primary antibody
Immunogen	KLH-conjugated synthetic peptide encompassing a sequence within the N-terminal region of human MAN2C1. The exact sequence is proprietary.
Purification	The antibody was purified by immunogen affinity chromatography.
Molecular Weight	Predicted: 115 kD; Observed: 116 kD
Form/Buffer	Liquid in 0.42% Potassium phosphate, 0.87% Sodium chloride, pH 7.3, 30% glycerol, and 0.01% sodium azide.
Alternative Names	MANA; MANA1; Alpha-mannosidase 2C1; Alpha mannosidase 6A8B; Alpha-D-mannoside mannosidase; Mannosidase alpha class 2C member 1
Gene Symbol	MAN2C1
Entrez Gene	4123(Human)
SwissProt	Q9NTJ4(Human)

\*AREX continuously optimizes our products. Webpage content may not reflect the latest updates. For inquiries, please contact [info@arexbio.com](mailto:info@arexbio.com) or your local distributor.

\*Clone Number, Reactivity, Source/Host and Clonality can be found in the product name and Key Features section above.

**DATASHEET****MAN2C1 Rabbit Polyclonal Antibody**

CAT. NO. APA18581

**DATA**

Western blot analysis of MAN2C1 expression in HepG2 (A), Jurkat (B) whole cell lysates. (Predicted band size: 115 kD; Observed band size: 116 kD)

**STORAGE**

Store at 4°C short term. For long term storage, store at -20°C, avoiding freeze/thaw cycles.

**NOTE**

For Research Use Only. Not for diagnostic, therapeutics, prophylactic or in vivo use.