

DATASHEET

CLSTN2 Rabbit Polyclonal Antibody

CAT. NO. APA18583

KEY FEATURES

Target	CLSTN2	Source / Host	Rabbit
Reactivity	Human, Mouse	Clonality	Polyclonal
Applications	WB	Conjugation	Unconjugated
Form / Buffer	Liquid in 0.42% Potassium phosphate, 0.87% Sodium chloride, pH 7.3, 30% glycerol, and 0.01% sodium azide.		Storage at -20°C

BACKGROUND

Postsynaptic adhesion molecule that binds to presynaptic neuroligins to mediate synapse formation, and which is involved in learning and memory . Promotes synapse development by acting as a cell adhesion molecule at the postsynaptic membrane, which associates with neuroligin-1 at the presynaptic membrane .

APPLICATION

To ensure optimal assay performance, AREX recommends conducting reagent titration tailored to each testing system for optimal detection results.

WB	1:500 - 1:1000
----	----------------

*Results are sample-specific. Please refer to your local assay conditions and test parameters for reference.

PRODUCT OVERVIEW

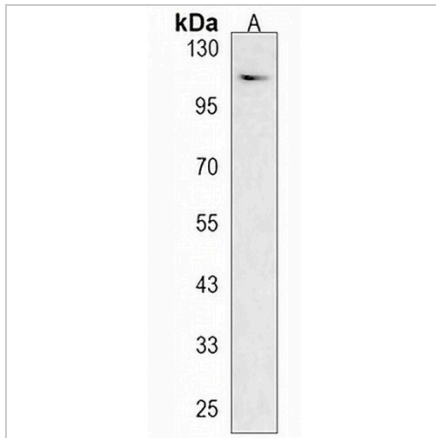
Description	Rabbit polyclonal antibody to CLSTN2
Specificity	Recognizes endogenous levels of CLSTN2 protein.
Antibody Type	Primary antibody
Immunogen	KLH-conjugated synthetic peptide encompassing a sequence within the Central region of human CLSTN2. The exact sequence is proprietary.
Purification	The antibody was purified by immunogen affinity chromatography.
Molecular Weight	Predicted: 107 kD; Observed: 110 kD
Form/Buffer	Liquid in 0.42% Potassium phosphate, 0.87% Sodium chloride, pH 7.3, 30% glycerol, and 0.01% sodium azide.
Alternative Names	CS2; Calsyntenin-2; Alcadin-gamma; Alc-gamma
Gene Symbol	CLSTN2
Entrez Gene	64084(Human); 64085(Mouse)
SwissProt	Q9H4D0(Human); Q9ER65(Mouse)

*AREX continuously optimizes our products. Webpage content may not reflect the latest updates. For inquiries, please contact info@arexbio.com or your local distributor.

*Clone Number, Reactivity, Source/Host and Clonality can be found in the product name and Key Features section above.

DATASHEET**CLSTN2 Rabbit Polyclonal Antibody**

CAT. NO. APA18583

DATA

Western blot analysis of CLSTN2 expression in K562 (A) whole cell lysates. (Predicted band size: 107 kD; Observed band size: 110 kD)

STORAGE

Store at 4°C short term. For long term storage, store at -20°C, avoiding freeze/thaw cycles.

NOTE

For Research Use Only. Not for diagnostic, therapeutics, prophylactic or in vivo use.