

DATASHEET

PDAP1 Rabbit Polyclonal Antibody

CAT. NO. APA18585

KEY FEATURES

Target	PDAP1	Source / Host	Rabbit
Reactivity	Human	Clonality	Polyclonal
Applications	WB	Conjugation	Unconjugated
Form / Buffer	Liquid in 0.42% Potassium phosphate, 0.87% Sodium chloride, pH 7.3, 30% glycerol, and 0.01% sodium azide.		Storage at -20°C

BACKGROUND

Enhances PDGFA-stimulated cell growth in fibroblasts, but inhibits the mitogenic effect of PDGFB.

APPLICATION

To ensure optimal assay performance, AREX recommends conducting reagent titration tailored to each testing system for optimal detection results.

WB	1:500 - 1:1000
----	----------------

*Results are sample-specific. Please refer to your local assay conditions and test parameters for reference.

PRODUCT OVERVIEW

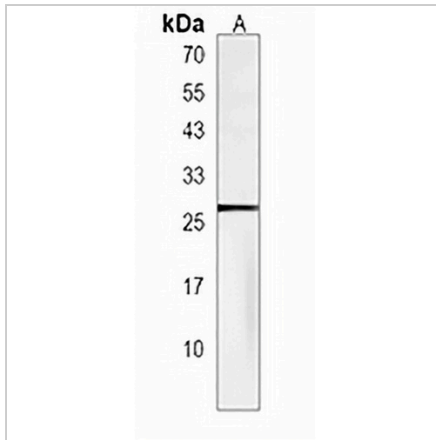
Description	Rabbit polyclonal antibody to PDAP1
Specificity	Recognizes endogenous levels of PDAP1 protein.
Antibody Type	Primary antibody
Immunogen	KLH-conjugated synthetic peptide encompassing a sequence within the N-terminal region of human PDAP1. The exact sequence is proprietary.
Purification	The antibody was purified by immunogen affinity chromatography.
Molecular Weight	Predicted: 20 kD; Observed: 27 kD
Form/Buffer	Liquid in 0.42% Potassium phosphate, 0.87% Sodium chloride, pH 7.3, 30% glycerol, and 0.01% sodium azide.
Alternative Names	HASPP28; 28 kDa heat- and acid-stable phosphoprotein; PDGF-associated protein; PAP; PDGFA-associated protein 1; PAP1
Gene Symbol	PDAP1
Entrez Gene	11333(Human)
SwissProt	Q13442(Human)

*AREX continuously optimizes our products. Webpage content may not reflect the latest updates. For inquiries, please contact info@arexbio.com or your local distributor.

*Clone Number, Reactivity, Source/Host and Clonality can be found in the product name and Key Features section above.

DATASHEET**PDAP1 Rabbit Polyclonal Antibody**

CAT. NO. APA18585

DATA

Western blot analysis of PDAP1 expression in U251MG (A) whole cell lysates. (Predicted band size: 20 kD; Observed band size: 27 kD)

STORAGE

Store at 4°C short term. For long term storage, store at -20°C, avoiding freeze/thaw cycles.

NOTE

For Research Use Only. Not for diagnostic, therapeutics, prophylactic or in vivo use.