

## DATASHEET

# CBWD6 Rabbit Polyclonal Antibody

CAT. NO. APA18588

### KEY FEATURES

Target	CBWD6	Source / Host	Rabbit
Reactivity	Human	Clonality	Polyclonal
Applications	WB	Conjugation	Unconjugated
Form / Buffer	Liquid in 0.42% Potassium phosphate, 0.87% Sodium chloride, pH 7.3, 30% glycerol, and 0.01% sodium azide.		Storage at -20°C

### BACKGROUND

Zinc chaperone that directly transfers zinc cofactor to target metalloproteins, thereby activating them. Catalyzes zinc insertion into the active site of methionine aminopeptidase METAP1, which function to cleave the initiator methionine from polypeptides during or after protein translation. Mechanistically, the N-terminal psi-PxLVp motif binds to the C6H2-type zinc finger of inactive form of METAP1. After formation of the docked complex, zinc is transferred from the CXCC motif in the GTPase domain of ZNG1F to the zinc binding site in the peptidase domain of METAP1 in a process requiring GTP hydrolysis. GTP/GDP exchange is required for release of active METAP1.

### APPLICATION

To ensure optimal assay performance, AREX recommends conducting reagent titration tailored to each testing system for optimal detection results.

WB	1:500 - 1:1000
----	----------------

\*Results are sample-specific. Please refer to your local assay conditions and test parameters for reference.

### PRODUCT OVERVIEW

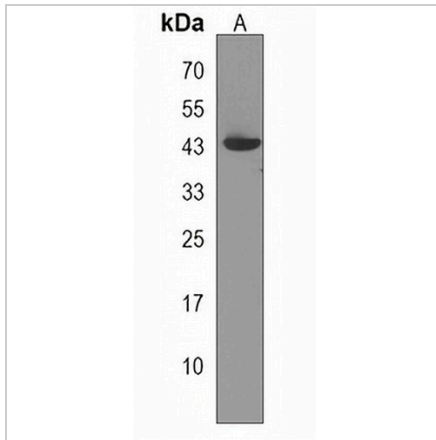
Description	Rabbit polyclonal antibody to CBWD6
Specificity	Recognizes endogenous levels of CBWD6 protein.
Antibody Type	Primary antibody
Immunogen	KLH-conjugated synthetic peptide encompassing a sequence within the Central region of human CBWD6. The exact sequence is proprietary.
Purification	The antibody was purified by immunogen affinity chromatography.
Molecular Weight	Predicted: 43 kD; Observed: 43 kD
Form/Buffer	Liquid in 0.42% Potassium phosphate, 0.87% Sodium chloride, pH 7.3, 30% glycerol, and 0.01% sodium azide.
Alternative Names	COBW domain-containing protein 6; Cobalamin synthase W domain-containing protein 6
Gene Symbol	CBWD6
Entrez Gene	644019(Human)
SwissProt	Q4V339(Human)

\*AREX continuously optimizes our products. Webpage content may not reflect the latest updates. For inquiries, please contact [info@arexbio.com](mailto:info@arexbio.com) or your local distributor.

\*Clone Number, Reactivity, Source/Host and Clonality can be found in the product name and Key Features section above.

**DATASHEET****CBWD6 Rabbit Polyclonal Antibody**

CAT. NO. APA18588

**DATA**

Western blot analysis of CBWD6 expression in CEM (A) whole cell lysates. (Predicted band size: 43 kD; Observed band size: 43 kD)

**STORAGE**

Store at 4°C short term. For long term storage, store at -20°C, avoiding freeze/thaw cycles.

**NOTE**

For Research Use Only. Not for diagnostic, therapeutics, prophylactic or in vivo use.