

DATASHEET

LRRC19 Rabbit Polyclonal Antibody

CAT. NO. APA18595

KEY FEATURES

Target	LRRC19	Source / Host	Rabbit
Reactivity	Human	Clonality	Polyclonal
Applications	WB	Conjugation	Unconjugated
Form / Buffer	Liquid in 0.42% Potassium phosphate, 0.87% Sodium chloride, pH 7.3, 30% glycerol, and 0.01% sodium azide.		Storage at -20°C

BACKGROUND

Pathogen-recognition receptor which mediates the activation of TRAF2- and TRAF6 NF-kappa-B signaling pathways and induces the expression of pro-inflammatory cytokines . In kidney, prevents infection by uropathogenic bacteria by inducing the production of cytokines, chemokines and antimicrobial substances. In gut, involved in host-microbiota interactions, plays a critical role in promoting the recruitment of immune cells and intestinal inflammation .

APPLICATION

To ensure optimal assay performance, AREX recommends conducting reagent titration tailored to each testing system for optimal detection results.

WB	1:500 - 1:1000
----	----------------

*Results are sample-specific. Please refer to your local assay conditions and test parameters for reference.

PRODUCT OVERVIEW

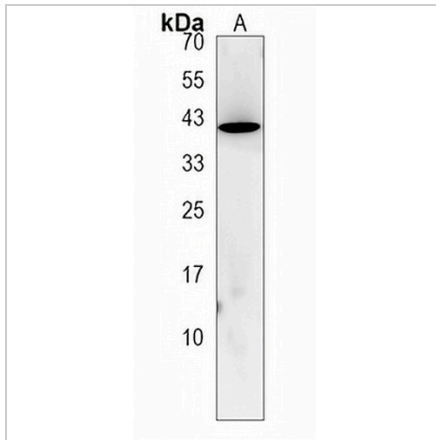
Description	Rabbit polyclonal antibody to LRRC19
Specificity	Recognizes endogenous levels of LRRC19 protein.
Antibody Type	Primary antibody
Immunogen	KLH-conjugated synthetic peptide encompassing a sequence within the C-terminal region of human LRRC19. The exact sequence is proprietary.
Purification	The antibody was purified by immunogen affinity chromatography.
Molecular Weight	Predicted: 42 kD; Observed: 42 kD
Form/Buffer	Liquid in 0.42% Potassium phosphate, 0.87% Sodium chloride, pH 7.3, 30% glycerol, and 0.01% sodium azide.
Alternative Names	Leucine-rich repeat-containing protein 19
Gene Symbol	LRRC19
Entrez Gene	64922(Human)
SwissProt	Q9H756(Human)

*AREX continuously optimizes our products. Webpage content may not reflect the latest updates. For inquiries, please contact info@arexbio.com or your local distributor.

*Clone Number, Reactivity, Source/Host and Clonality can be found in the product name and Key Features section above.

DATASHEET**LRRC19 Rabbit Polyclonal Antibody**

CAT. NO. APA18595

DATA

Western blot analysis of LRRC19 expression in HepG2 (A) whole cell lysates. (Predicted band size: 42 kD; Observed band size: 42 kD)

STORAGE

Store at 4°C short term. For long term storage, store at -20°C, avoiding freeze/thaw cycles.

NOTE

For Research Use Only. Not for diagnostic, therapeutics, prophylactic or in vivo use.