

DATASHEET

PDE8B Rabbit Polyclonal Antibody

CAT. NO. APA18610

KEY FEATURES

Target	PDE8B	Source / Host	Rabbit
Reactivity	Mouse	Clonality	Polyclonal
Applications	WB	Conjugation	Unconjugated
Form / Buffer	Liquid in 0.42% Potassium phosphate, 0.87% Sodium chloride, pH 7.3, 30% glycerol, and 0.01% sodium azide.		Storage at -20°C

BACKGROUND

The protein encoded by this gene is a cyclic nucleotide phosphodiesterase (PDE) that catalyzes the hydrolysis of the second messenger cAMP. The encoded protein, which does not hydrolyze cGMP, is resistant to several PDE inhibitors. Defects in this gene are a cause of autosomal dominant striatal degeneration (ADSD). Several transcript variants encoding different isoforms have been found for this gene.

APPLICATION

To ensure optimal assay performance, AREX recommends conducting reagent titration tailored to each testing system for optimal detection results.

WB	1:500 - 1:1000
----	----------------

*Results are sample-specific. Please refer to your local assay conditions and test parameters for reference.

PRODUCT OVERVIEW

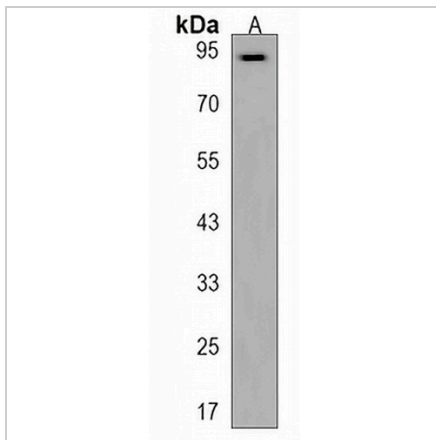
Description	Rabbit polyclonal antibody to PDE8B
Specificity	Recognizes endogenous levels of PDE8B protein.
Antibody Type	Primary antibody
Immunogen	KLH-conjugated synthetic peptide encompassing a sequence within the Central region of human PDE8B. The exact sequence is proprietary.
Purification	The antibody was purified by immunogen affinity chromatography.
Molecular Weight	Predicted: 98 kD; Observed: 94 kD
Form/Buffer	Liquid in 0.42% Potassium phosphate, 0.87% Sodium chloride, pH 7.3, 30% glycerol, and 0.01% sodium azide.
Alternative Names	High affinity cAMP-specific and IBMX-insensitive 3',5'-cyclic phosphodiesterase 8B; HsPDE8B; Cell proliferation-inducing gene 22 protein
Gene Symbol	PDE8B
Entrez Gene	218461(Mouse)
SwissProt	E9Q4S1(Mouse)

*AREX continuously optimizes our products. Webpage content may not reflect the latest updates. For inquiries, please contact info@arexbio.com or your local distributor.

*Clone Number, Reactivity, Source/Host and Clonality can be found in the product name and Key Features section above.

DATASHEET**PDE8B Rabbit Polyclonal Antibody**

CAT. NO. APA18610

DATA

Western blot analysis of PDE8B expression in mouse heart (A) whole cell lysates.
(Predicted band size: 98 kD; Observed band size: 94 kD)

STORAGE

Store at 4°C short term. For long term storage, store at -20°C, avoiding freeze/thaw cycles.

NOTE

For Research Use Only. Not for diagnostic, therapeutics, prophylactic or in vivo use.