

**DATASHEET**

**Ephrin B1 Rabbit Polyclonal Antibody**

CAT. NO. APA18615

**KEY FEATURES**

Target	Ephrin B1	Source / Host	Rabbit
Reactivity	Human	Clonality	Polyclonal
Applications	WB	Conjugation	Unconjugated
Form / Buffer	Liquid in 0.42% Potassium phosphate, 0.87% Sodium chloride, pH 7.3, 30% glycerol, and 0.01% sodium azide.		Storage at-20°C

**BACKGROUND**

Cell surface transmembrane ligand for Eph receptors, a family of receptor tyrosine kinases which are crucial for migration, repulsion and adhesion during neuronal, vascular and epithelial development . Binding to Eph receptors residing on adjacent cells leads to contact-dependent bidirectional signaling into neighboring cells . Shows high affinity for the receptor tyrosine kinase EPHB1/ELK . Can also bind EPHB2 and EPHB3 . Binds to, and induces collapse of, commissural axons/growth cones in vitro . May play a role in constraining the orientation of longitudinally projecting axons .

**APPLICATION**

To ensure optimal assay performance, AREX recommends conducting reagent titration tailored to each testing system for optimal detection results.

WB	1:500 - 1:1000
----	----------------

\*Results are sample-specific. Please refer to your local assay conditions and test parameters for reference.

**PRODUCT OVERVIEW**

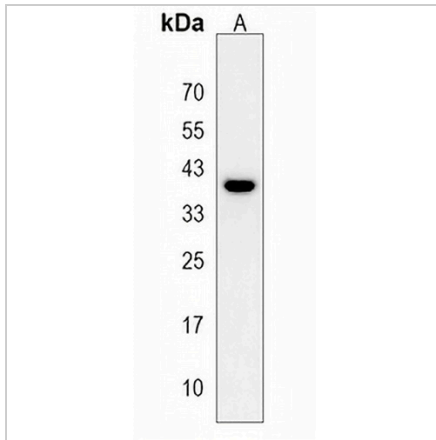
Description	Rabbit polyclonal antibody to Ephrin B1
Specificity	Recognizes endogenous levels of Ephrin B1 protein.
Antibody Type	Primary antibody
Immunogen	KLH-conjugated synthetic peptide encompassing a sequence within the Central region of human Ephrin B1. The exact sequence is proprietary.
Purification	The antibody was purified by immunogen affinity chromatography.
Molecular Weight	Predicted: 38 kD; Observed: 38 kD
Form/Buffer	Liquid in 0.42% Potassium phosphate, 0.87% Sodium chloride, pH 7.3, 30% glycerol, and 0.01% sodium azide.
Alternative Names	EFL3; EPLG2; LERK2; Ephrin-B1; EFL-3; ELK ligand; ELK-L; EPH-related receptor tyrosine kinase ligand 2; LERK-2
Gene Symbol	EFNB1
Entrez Gene	1947(Human)
SwissProt	P98172(Human)

\*AREX continuously optimizes our products. Webpage content may not reflect the latest updates. For inquiries, please contact [info@arexbio.com](mailto:info@arexbio.com) or your local distributor.

\*Clone Number, Reactivity, Source/Host and Clonality can be found in the product name and Key Features section above.

**DATASHEET****Ephrin B1 Rabbit Polyclonal Antibody**

CAT. NO. APA18615

**DATA**

Western blot analysis of Ephrin B1 expression in CEM (A) whole cell lysates. (Predicted band size: 38 kD; Observed band size: 38 kD)

**STORAGE**

Store at 4°C short term. For long term storage, store at -20°C, avoiding freeze/thaw cycles.

**NOTE**

For Research Use Only. Not for diagnostic, therapeutics, prophylactic or in vivo use.