

DATASHEET

Shugoshin 2 Rabbit Polyclonal Antibody

CAT. NO. APA18616

KEY FEATURES

| | | | |
|---------------|-----------------------------------------------------------------------------------------------------------|---------------|---------------------|
| Target | Shugoshin 2 | Source / Host | Rabbit |
| Reactivity | Human | Clonality | Polyclonal |
| Applications | WB | Conjugation | Unconjugated |
| Form / Buffer | Liquid in 0.42% Potassium phosphate, 0.87% Sodium chloride, pH 7.3, 30% glycerol, and 0.01% sodium azide. | | Storage at -20°C |

BACKGROUND

Cooperates with PPP2CA to protect centromeric cohesin from separase-mediated cleavage in oocytes specifically during meiosis I. Has a crucial role in protecting REC8 at centromeres from cleavage by separase. During meiosis, protects centromeric cohesion complexes until metaphase II/anaphase II transition, preventing premature release of meiosis-specific REC8 cohesin complexes from anaphase I centromeres. Is thus essential for an accurate gametogenesis. May act by targeting PPP2CA to centromeres, thus leading to cohesin dephosphorylation. Essential for recruiting KIF2C to the inner centromere and for correcting defective kinetochore attachments. Involved in centromeric enrichment of AUKRB in prometaphase.

APPLICATION

To ensure optimal assay performance, AREX recommends conducting reagent titration tailored to each testing system for optimal detection results.

| | |
|----|----------------|
| WB | 1:500 - 1:1000 |
|----|----------------|

*Results are sample-specific. Please refer to your local assay conditions and test parameters for reference.

PRODUCT OVERVIEW

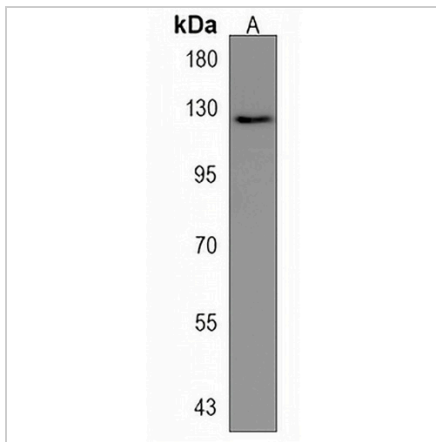
| | |
|-------------------|---------------------------------------------------------------------------------------------------------------------------------------------|
| Description | Rabbit polyclonal antibody to Shugoshin 2 |
| Specificity | Recognizes endogenous levels of Shugoshin 2 protein. |
| Antibody Type | Primary antibody |
| Immunogen | KLH-conjugated synthetic peptide encompassing a sequence within the Central region of human Shugoshin 2. The exact sequence is proprietary. |
| Purification | The antibody was purified by immunogen affinity chromatography. |
| Molecular Weight | Predicted: 144 kD; Observed: 128 kD |
| Form/Buffer | Liquid in 0.42% Potassium phosphate, 0.87% Sodium chloride, pH 7.3, 30% glycerol, and 0.01% sodium azide. |
| Alternative Names | Shugoshin-like 2; Shugoshin-2; Sgo2; Tripin |
| Gene Symbol | SGOL2 |
| Entrez Gene | 151246(Human) |
| SwissProt | Q562F6(Human) |

*AREX continuously optimizes our products. Webpage content may not reflect the latest updates. For inquiries, please contact info@arexbio.com or your local distributor.

*Clone Number, Reactivity, Source/Host and Clonality can be found in the product name and Key Features section above.

DATASHEET**Shugoshin 2 Rabbit Polyclonal Antibody**

CAT. NO. APA18616

DATA

Western blot analysis of Shugoshin 2 expression in U937 (A) whole cell lysates. (Predicted band size: 144 kD; Observed band size: 128 kD)

STORAGE

Store at 4°C short term. For long term storage, store at -20°C, avoiding freeze/thaw cycles.

NOTE

For Research Use Only. Not for diagnostic, therapeutics, prophylactic or in vivo use.