

DATASHEET

RALYL Rabbit Polyclonal Antibody

CAT. NO. APA18619

KEY FEATURES

Target	RALYL	Source / Host	Rabbit
Reactivity	Human	Clonality	Polyclonal
Applications	WB	Conjugation	Unconjugated
Form / Buffer	Liquid in 0.42% Potassium phosphate, 0.87% Sodium chloride, pH 7.3, 30% glycerol, and 0.01% sodium azide.		Storage at -20°C

BACKGROUND

RNA-binding Raly-like protein (RALYL), also known as Heterogeneous nuclear ribonucleoprotein C-like 3, hnRNP core protein C-like 3. Belongs to the RRM HNRPC family. RALY subfamily Tissue specificity: Widely expressed, with highest levels in brain

APPLICATION

To ensure optimal assay performance, AREX recommends conducting reagent titration tailored to each testing system for optimal detection results.

WB	1:500 - 1:1000
----	----------------

*Results are sample-specific. Please refer to your local assay conditions and test parameters for reference.

PRODUCT OVERVIEW

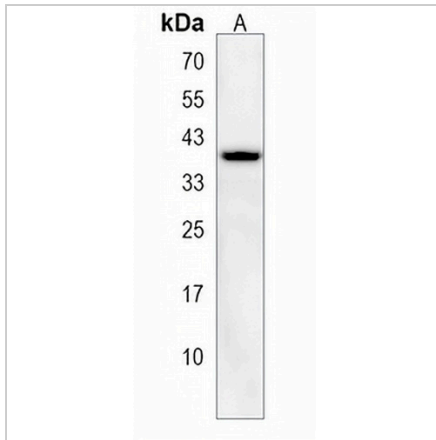
Description	Rabbit polyclonal antibody to RALYL
Specificity	Recognizes endogenous levels of RALYL protein.
Antibody Type	Primary antibody
Immunogen	KLH-conjugated synthetic peptide encompassing a sequence within the N-terminal region of human RALYL. The exact sequence is proprietary.
Purification	The antibody was purified by immunogen affinity chromatography.
Molecular Weight	Predicted: 32 kD; Observed: 37 kD
Form/Buffer	Liquid in 0.42% Potassium phosphate, 0.87% Sodium chloride, pH 7.3, 30% glycerol, and 0.01% sodium azide.
Alternative Names	HNRPCL3; RNA-binding Raly-like protein; hRALYL; Heterogeneous nuclear ribonucleoprotein C-like 3; hnRNP core protein C-like 3
Gene Symbol	RALYL
Entrez Gene	138046(Human)
SwissProt	Q86SE5(Human)

*AREX continuously optimizes our products. Webpage content may not reflect the latest updates. For inquiries, please contact info@arexbio.com or your local distributor.

*Clone Number, Reactivity, Source/Host and Clonality can be found in the product name and Key Features section above.

DATASHEET**RALYL Rabbit Polyclonal Antibody**

CAT. NO. APA18619

DATA

Western blot analysis of RALYL expression in 293 (A) whole cell lysates. (Predicted band size: 32 kD; Observed band size: 37 kD)

STORAGE

Store at 4°C short term. For long term storage, store at -20°C, avoiding freeze/thaw cycles.

NOTE

For Research Use Only. Not for diagnostic, therapeutics, prophylactic or in vivo use.